

Figure & Index Number	Part Number	FSCM	Description							Units Per Assy	Usable On Code	SMR Code
			1	2	3	4	5	6	7			
- 96	RN55D8250F	81349	.	RESISTOR	,FXD	,FILM				3		PADZZ
- 97	RNC55K5110FS	81349	.	RESISTOR	,FXD	,FILM				2		PADZZ
- 98	RN55D5110F	81349	.	RESISTOR	,FXD	,FILM				2		PADZZ
- 99	RN55D6811F	81349	.	RESISTOR	,FXD	,FILM				3		PADZZ
-100	CF07-183J	78488	.	RESISTOR	,FXD	,COMP				1		PADZZ
-101	CF07-821J	78488	.	RESISTOR	,FXD	,COMP				2		PADZZ
-102	RN55D1002F	81349	.	RESISTOR	,FXD	,FILM				2		PADZZ
-103	RN55D1001F	81349	.	RESISTOR	,FXD	,FILM				3		PADZZ
-104	RNC55K3831FS	81349	.	RESISTOR	,FXD	,FILM				3		PADZZ
-105	RN55D3831F	81349	.	RESISTOR	,FXD	,FILM				3		PADZZ
-106	CF07-562J	78488	.	RESISTOR	,FXD	,COMP				1		PADZZ
-107	RN55D2001F	81349	.	RESISTOR	,FXD	,FILM				1		PADZZ
-108	RN55D9093F	81349	.	RESISTOR	,FXD	,FILM				1		PADZZ
-109	CF07-106J	78488	.	RESISTOR	,FXD	,COMP				1		PADZZ
-110	CF07-222J	78488	.	RESISTOR	,FXD	,COMP				2		PADZZ
-111	RNC55K4221FS	81349	.	RESISTOR	,FXD	,FILM				1		PADZZ
-112	RN55D1332F	81349	.	RESISTOR	,FXD	,FILM				1		PADZZ
-113	CF07-681J	78488	.	RESISTOR	,FXD	,COMP				1		PADZZ
-114	CF07-473J	78488	.	RESISTOR	,FXD	,COMP				3		PADZZ
-115	CF07-153J	78488	.	RESISTOR	,FXD	,COMP				1		PADZZ
-116	ERD50TJ102	54473	.	RESISTOR	,FXD	,COMP				1		PADZZ
-117	65499-101	22526	.	CONNECTOR	,PLUG	,ELEC				4		PADZZ
-118	SN54LS138J	01295	.	MICROCIRCUIT						1		PADZZ
-119	CD4021BF	02735	.	MICROCIRCUIT						1		PADZZ
-120	SN54LS368AJ	01295	.	MICROCIRCUIT						1		PADZZ
-121	MC12013L	04713	.	MICROCIRCUIT						1		PADZZ
-122	10085-5620	14304	.	MICROCIRCUIT						1		PADZZ
-123	CD4094BF	02735	.	MICROCIRCUIT						2		PADZZ
-124	SN54LS168AJ	01295	.	MICROCIRCUIT						1		PADZZ
-125	SN54LS192J	01295	.	MICROCIRCUIT						2		PADZZ
-126	M38510/00206BCB	81349	.	MICROCIRCUIT						1		PADZZ
-127	M38510/30301BCB	81349	.	MICROCIRCUIT						1		PADZZ
-128	M38510/30501BCB	81349	.	MICROCIRCUIT						1		PADZZ
-129	SN54LS74AJ	01295	.	MICROCIRCUIT						1		PADZZ
-130	M38510/30106BEB	81349	.	MICROCIRCUIT						1		PADZZ
-131	M38510/07101BCB	81349	.	MICROCIRCUIT						2		PADZZ
-132	SN54S74J	01295	.	MICROCIRCUIT						2		PADZZ
-133	SN54LS109AJ	01295	.	MICROCIRCUIT						1		PADZZ
-134	M38510/06101BEB	81349	.	MICROCIRCUIT						1		PADZZ
-135	FBT00-015	80103	.	SCD						1		PADZZ
-136	10085-5610	14304	.	MICROCIRCUIT						1		PADZZ
-137	CD4046BF	02735	.	MICROCIRCUIT						1		PADZZ
-138	524-AG11D	91506	.	SOCKET PLUG IN	ELEC					1		PADZZ
-139	10085-5609	14304	.	CIRCUIT CARD						1		XA
-140	6611-0135	14304	.	RETAINER	,SCREW					7		PADZZ
-141	10085-5156	14304	.	BUSHING						7		PADZZ
-142	MS51957-17	96906	.	SCREW	,MACHINE (AP)					7		PADZZ
-143	MS35338-135	96906	.	WASHER	,SPLIT (AP)					11		PADZZ
-144	10085-5113	14304	.	COVER						1		XB
-145	MS15795-803	96906	.	WASHER	,FLAT (AP)					4		PADZZ
-146	18092B-B0440-14	46384	.	SPACER						4		XB
-147	MS51957-13	96906	.	SCREW	,MACHINE (AP)					4		PADZZ

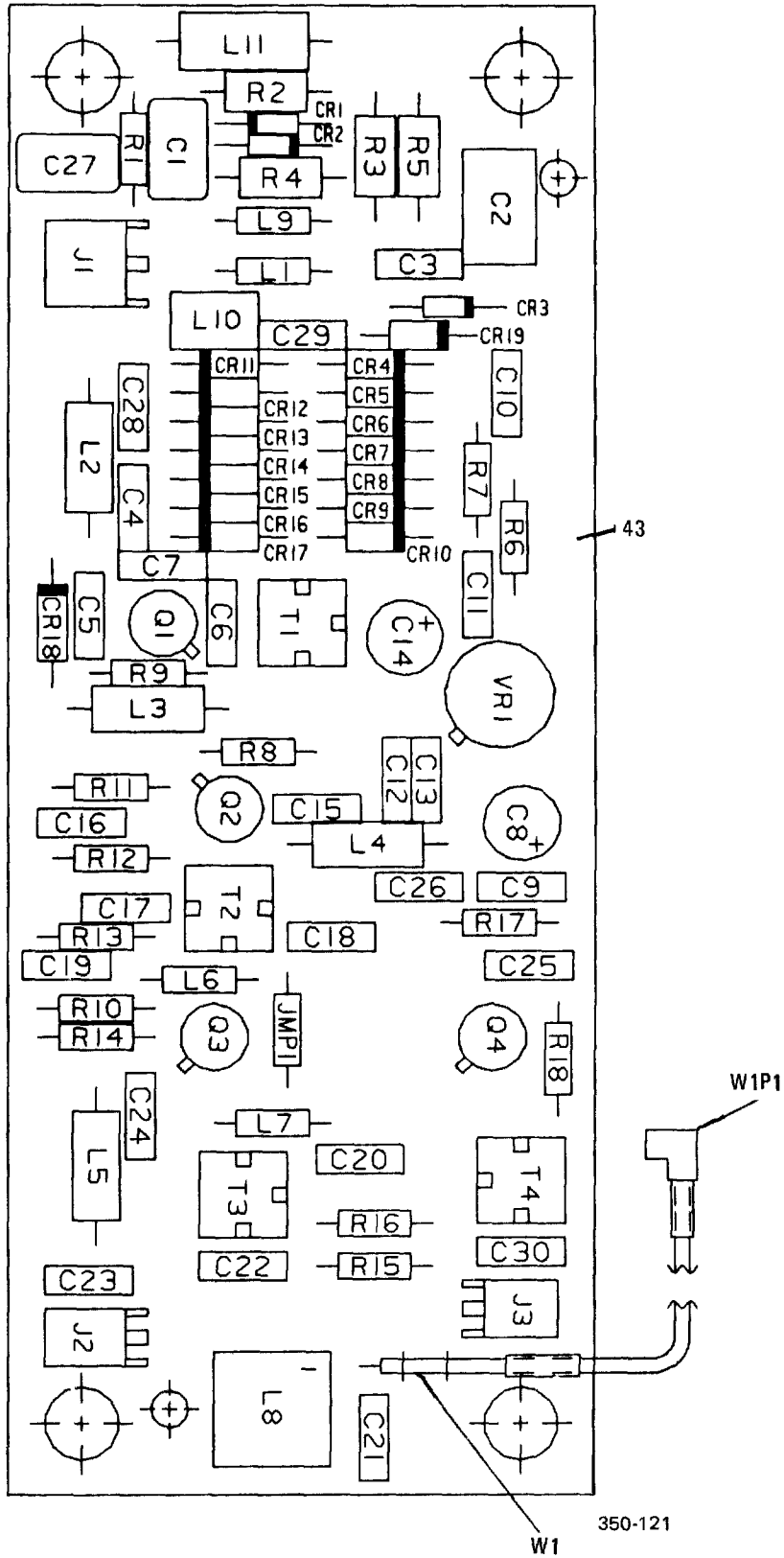


Figure 7-22. VCO PWB Assy, A1A10A1

NOTE

To find index numbers for circuit board components, use the reference designator index at the end of this chapter. The complete reference designator for a circuit board component consists of "1," followed by the assembly designator (A1A1, A1A2, etc.), then the reference designator on the illustration. For example, the complete reference designator for R25 on the Exciter PWB Assy is 1A1A1 R25.

Figure & Index Number	Part Number	FSCM	Description 1 2 3 4 5 6 7	Units	Usable	SMR Code
				Per Assy	On Code	
7-22-	10085-5640	14304	CIRCUIT CARD ASSY,A1A10A1	1		XA
- 1	CM05FD101J03	81349	. CAP FXD MICA	1		PADZZ
- 2	C61-0002-003	14304	. CAPACITOR,FXD,FILM	1		PADZZ
- 3	CK05BX102K	81349	. CAPACITOR,FXD,CER	9		PADZZ
- 4	T392C106M025AS	31433	. CAP,FXD,ELCTLT	2		PADZZ
- 5	CK06BX104K	81349	. CAPACITOR,FXD,CER	4		PADZZ
- 6	CK06BX103K	81349	. CAPACITOR,FXD,CER	9		PADZZ
- 7	CK05BX101K	81349	. CAPACITOR,FXD,CER	2		PADZZ
- 8	CK05BX100K	81349	. CAPACITOR,FXD,CER	1		PADZZ
- 9	CM05FD331G03	81349	. CAPACITOR,FXD,MICA	1		PADZZ
- 10	JAN1N5711	81349	. SEMICOND DEVICE,DIO	3		PADZZ
- 11	MV-309	04713	. SEMICOND DEVICE,DIO	14		PADZZ
- 12	JAN1N3064	81349	. SEMICOND DEVICE,DIO	1		PADZZ
- 13	5082-3168	98734	. SEMICOND DEVICE,DIO	1		PADZZ
- 14	22-14-2034	27264	. CONNECTOR,RCPT,ELEC	1		PADZZ
- 15	22-14-2024	27264	. CONNECTOR,RCPT,ELEC	2		PADZZ
- 16	MP-1142	14304	. JUMPER,ELEC	1		PADZZ
- 17	MS75084-10	96906	. COIL,RF	2		PADZZ
- 18	MS14046-1	96906	. COIL,RF	4		PADZZ
- 19	MS75084-12	96906	. COIL,RF	1		PADZZ
- 20	MS75083-2	96906	. COIL RF	1		PADZZ
- 21	51-328-3850-910	98291	. COIL RF	1		PADZZ
- 22	10085-5612	14304	. COIL RF	1		PADZZ
- 23	MS75089-12	96906	. COIL,RF	1		PADZZ
- 24	U310	04713	. TRANSISTOR	4		PADZZ
- 25	CF07-560J	78488	. RESISTOR,FXD,COMP	1		PADZZ
- 26	RNC55K4990FS	81349	. RESISTOR,FXD,FILM	1		PADZZ
- 27	RN55D6811F	81349	. RESISTOR,FXD,FILM	1		PADZZ
- 28	RNC55K8451FS	81349	. RESISTOR FXD FILM	1		PADZZ
- 29	RN55D2210F	81349	. RESISTOR FXD FILM	1		PADZZ
- 30	CF07-101J	78488	. RESISTOR,FXD,COMP	2		PADZZ
- 31	CF07-470J	78488	. RESISTOR,FXD,COMP	2		PADZZ
- 32	CF07-563J	78488	. RESISTOR,FXD,COMP	1		PADZZ
- 33	CF07-100J	78488	. RESISTOR,FXD,COMP	1		PADZZ
- 34	CF07-151J	78488	. RESISTOR,FXD,COMP	2		PADZZ
- 35	CF07-153J	78488	. RESISTOR,FXD,COMP	1		PADZZ
- 36	CF07-273J	78488	. RESISTOR,FXD,COMP	1		PADZZ
- 37	CF07-391J	78488	. RESISTOR,FXD,COMP	1		PADZZ
- 38	CF07-271J	78488	. RESISTOR,FXD,COMP	1		PADZZ
- 39	10073-7002	14304	. TRANSFORMER,RF	1		PADZZ
- 40	10085-5611	14304	. TRANSFORMER,RF	1		PADZZ
- 41	10073-7014	14304	. TRANSFORMER,RF	2		PADZZ
- 42	M38510/10703BXC	81349	. MICROCIRCUIT	1		PADZZ
- 43	10085-5649	14304	. CIRCUIT CARD	1		XA

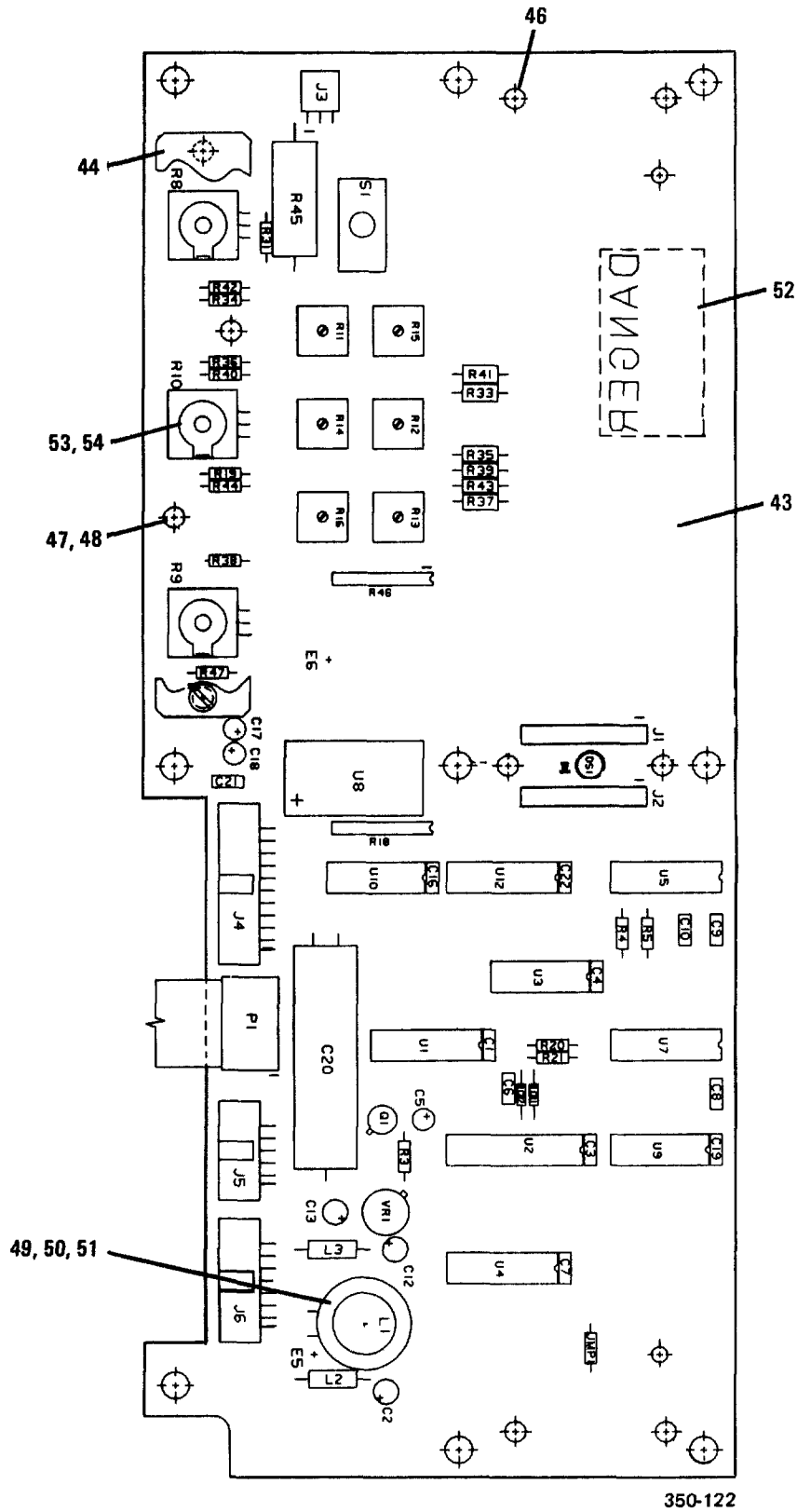


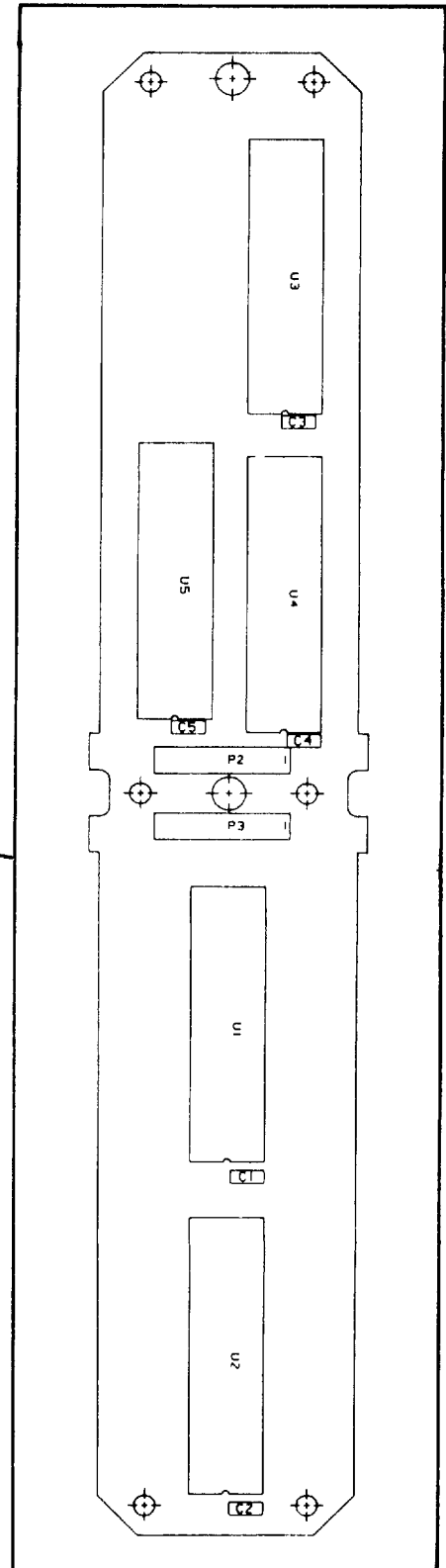
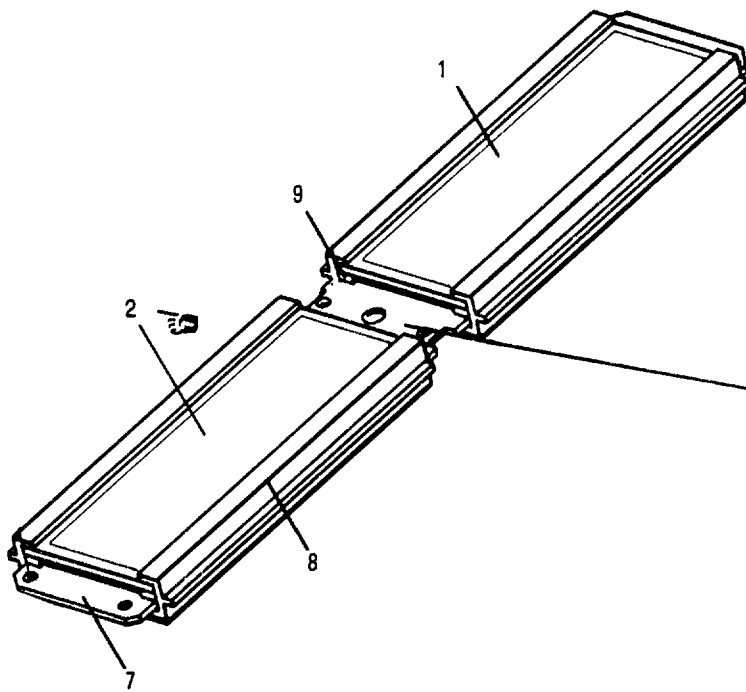
Figure 7-23. Front Panel PWB Assy, A1A11A1

NOTE

To find index numbers for circuit board components, use the reference designator index at the end of this chapter. The complete reference designator for a circuit board component consists of "1," followed by the assembly designator (A1A1, A1A2, etc.), then the reference designator on the illustration. For example, the complete reference designator for R25 on the Exciter PWB Assy is 1A1A1 R25.

Figure & Index Number	Part Number	FSCM	Description							Units Per Assy	Usable On Code	SMR Code
			1	2	3	4	5	6	7			
7-23-	10085-2100	14304	CIRCUIT	CARD	ASSY,	A1A1	A1	A1	1		PAODD	
- 1	MDO15E104MAA	04222	.	CAPACITOR,	FXD,	CER			12		PADZZ	
- 2	T392B106M010AS	31433	.	CAP,	FXD,	ELCTLT			1		PADZZ	
- 3	199D225X9025BG2	56289	.	CAP,	FXD,	ELCTLT			1		PADZZ	
- 4	TAPF10M25	31433	.	CAP,	FXD,	ELCTLT			2		PADZZ	
- 5	T392B335M025AS	31433	.	CAP,	FXD,	ELCTLT			2		PADZZ	
- 6	672D477H025DS5J	56289	.	CAPACITOR,	FXD,	ALUM			1		PADZZ	
- 7	JAN1N4454	81349	.	SEMICON	DEVICE,	DIO			2		PADZZ	
- 8	5082-4655	01295	.	LED					1		PADZZ	
- 9	87334-3	00779	.	CONNECTOR,	RCPT,	ELEC			2		PADZZ	
- 10	22-12-2034	27264	.	CONNECTOR,	RCPT,	ELEC			1		PADZZ	
- 11	1251-8273	28480	.	CONNECTOR,	RCPT,	ELEC			1		PADZZ	
- 12	609-1007	15912	.	CONNECTOR,	RCPT,	ELEC			1		PADZZ	
- 13	1251-8274	28480	.	CONNECTOR,	RCPT,	ELEC			1		PADZZ	
- 14	MP-1142	14304	.	JUMPER,	ELEC				8		PADZZ	
- 15	10085-2144	14304	.	COIL,	RF				1		PADZZ	
- 16	MS14046-6	96906	.	COIL,	RF				1		PADZZ	
- 17	MS90538-20	96906	.	COIL,	RF				1		PADZZ	
- 18	10085-2113	14304	.	CABLE	ASSY,	RF			1		PADZZ	
- 19	JAN2N2222A	81349	.	TRANSISTOR					1		PADZZ	
- 20	CF07-104J	78488	.	RESISTOR,	FXD,	COMP			3		PADZZ	
- 21	CF07-103J	78488	.	RESISTOR,	FXD,	COMP			2		PADZZ	
- 22	CF07-154J	78488	.	RESISTOR,	FXD,	COMP			1		PADZZ	
- 23	10085-2141	14304	.	RESISTOR,	VARIABLE				1		PADZZ	
- 24	10085-2143	14304	.	RESISTOR,	VARIABLE				1		PADZZ	
- 25	10085-2142	14304	.	RESISTOR,	VARIABLE				1		PADZZ	
- 26	3386F-1-502	32997	.	RESISTOR,	VARIABLE				6		PADZZ	
- 27	4308R-101-472	32997	.	RESISTOR,	NETWORK				1		PADZZ	
- 28	CF07-101J	78488	.	RESISTOR,	FXD,	COMP			1		PADZZ	
- 29	RW74U6R49F	81349	.	RESISTOR,	FXD,	WW			1		PADZZ	
- 30	4308R-101-102	32997	.	RESISTOR,	NETWORK				1		PADZZ	
- 31	7101SDV700E	95146	.	SWITCH,	TOGGLE				1		PADZZ	
- 32	SN54LS138J	01295	.	MICROCIRCUIT					1		PADZZ	
- 33	804991-1	96214	.	MICROCIRCUIT					1		PADZZ	
- 34	SN54LS00J	01295	.	MICROCIRCUIT					1		PADZZ	
- 35	M38510/30608BEB	81349	.	MICROCIRCUIT					1		PADZZ	
- 36	7901401EB	14933	.	MICROCIRCUIT					1		PADZZ	
- 37	SN54LS367AJ	01295	.	MICROCIRCUIT					1		PADZZ	
- 38	E312-E0001	63312	.	MICROCIRCUIT					1		PADZZ	
- 39	SN54LS74AJ	01295	.	MICROCIRCUIT					1		PADZZ	
- 40	DM5416J	27014	.	MICROCIRCUIT					1		PADZZ	
- 41	CD4094BF	02735	.	MICROCIRCUIT					1		PADZZ	
- 42	UA78M12HM	07263	.	MICROCIRCUIT					1		PADZZ	
- 43	10085-2109	14304	.	CIRCUIT	CARD				1		XA	
- 44	10085-2105	14304	.	BRACKET,	ANGLE				1		XB	

Figure & Index Number	Part Number	FSCM	Description							Units Per Assy	Usable On Code	SMR Code
			1	2	3	4	5	6	7			
- 45	1010M	60963	.	SPACER						1		XB
- 46	18097B-B0440-14	46384	.	SPACER						10		XB
- 47	MS35338-135	96906	.	WASHER, SPLIT (AP)						4		PADZZ
- 48	MS51957-14	96906	.	SCREW, MACHINE (AP)						4		PADZZ
- 49	O10440B062	13764	.	SCREW, MACHINE, NYLON						1		PAOZZ
- 50	2813-03-16	80045	.	NUT PL HEXAGON						1		PAOZZ
- 51	2261-N116	06540	.	WASHER, FLAT, NYLON						2		PAOZZ
- 52	MP-0745	14304	.	LABEL						1		MDO
- 53	H-0963	14304	.	NUT PLAIN HEX						3		XB
- 54	MS35333-76	96906	.	WASHER LOCK						3		PAOZZ



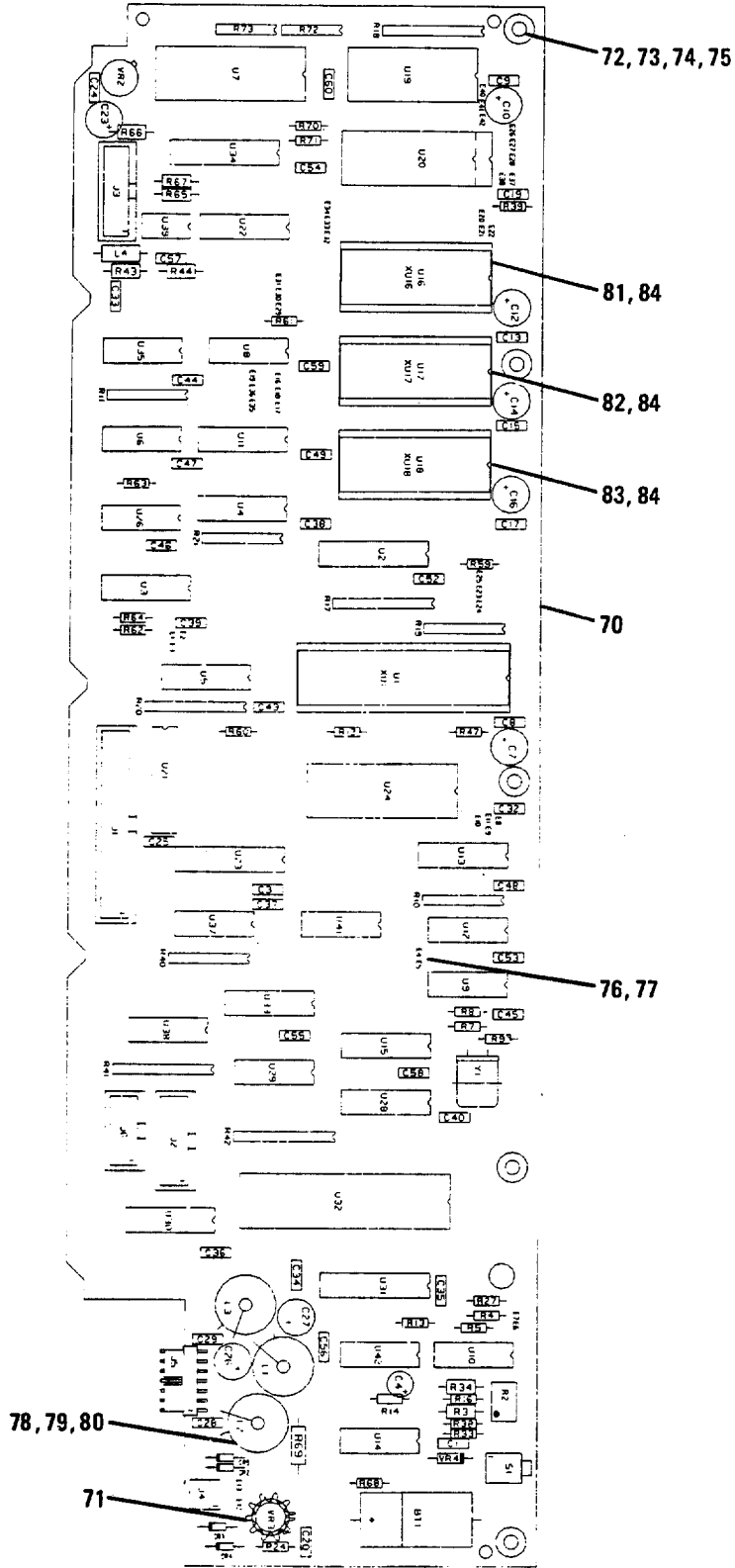
350-123

Figure 7-24. Display Assy, A1A11A2

NOTE

To find Index numbers for circuit board components, use the reference designator index at the end of this chapter. The complete reference designator for a circuit board component consists of "1," followed by the assembly designator (A1A1, A1A2, etc.), then the reference designator on the illustration. For example, the complete reference designator for R25 on the Exciter PWB is 1A1A1 R25.

Figure & Index Number	Part Number	FSCM	Description 1 2 3 4 5 6 7	Units Per Assy	Usable On Code	SMR Code
7-24-	10085-2110	14304	DISPLAY ASSY, A1A11A2	1		PAODD
- 1	10085-2116	32890	. LCD, FREQUENCY	1		PADZZ
- 2	10085-2126	66670	. LCD, METER	1		PADZZ
- 3	10085-2120	14304	. CIRCUIT CARD ASSY	1		PAOLD
- 4	MD015E104MAA	04222	. CAPACITOR, FXD, CER	5		PADZZ
- 5	65516-110	22526	. CONTACT ASSY	2		PADZZ
- 6	HLCD0438AY	61587	. MICROCIRCUIT	5		PADZZ
- 7	10085-2129	14304	. CIRCUIT CARD	1		XA
- 8	10085-2112	14304	. BRACKET, RETAINER	2		XB
- 9	10085-5136	14304	. CONNECTOR, RCPT, ELEC	4		PADZZ
- 10	10085-2126	14304	. DISPLAY, BARGRAPH	1		PADZZ
- 11	10085-2116	14304	. DISPLAY, LCD	1		PADZZ
- 12	10085-2115	14304	. BACK, LIGHT	2		PADZZ



350-124

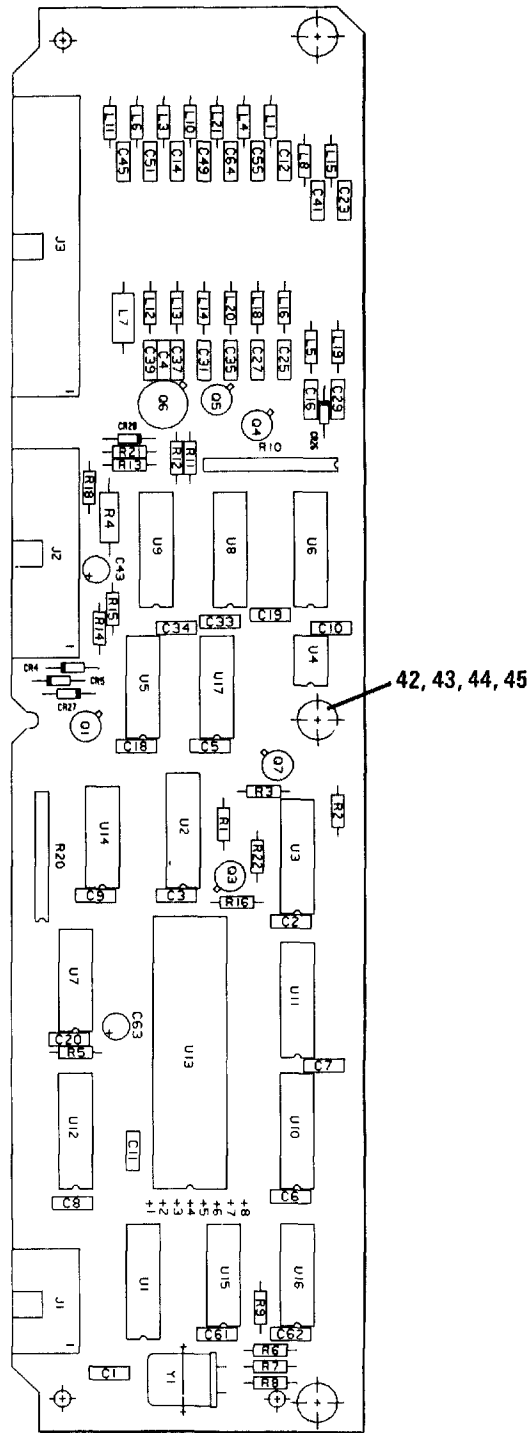
Figure 7-25. Transceiver Control PWB Assy A1A12

NOTE

To find index numbers for circuit board components, use the reference designator index at the end of this chapter. The complete reference designator for a circuit board component consists of "1," followed by the assembly designator (A1A1, A1A2, etc.), then the reference designator on the illustration. For example, the complete reference designator for R25 on the Exciter PWB Assy is 1A1A1 R25.

Figure & Index Number	Part Number	FSCM	Description							Units Per Assy	Usable On Code	SMR Code
			1	2	3	4	5	6	7			
7-25-	10085-9000	14304	CIRCUIT CARD ASSY,A1A12							1		PAODD
- 1	TO4/43	55002	. BATTERY, LITHIUM							1		XB
- 2	CK06BX104K	81349	. CAPACITOR, FXD, CER							38		PADZZ
- 3	T392B155M035AS	31433	. CAP, FXD, ELCTLT							2		PADZZ
- 4	T392F157K010AS	31433	. CAP, FXD, ELCTLT							5		PADZZ
- 5	T392E476K025AS	31433	. CAP, FXD, ELCTLT							2		PADZZ
- 6	T392F157M010AS	31433	. CAP, FXD, ELCTLT							5		PADZZ
- 7	T392E476M025AS	31433	. CAP, FXD, ELCTLT							2		PADZZ
- 8	JAN1N4454	81349	. SEMICOND DEVICE, DIO							4		PADZZ
- 9	609-3427	15912	. CONNECTOR, RCPT, ELEC							1		PADZZ
- 10	609-1427	59730	. CONNECTOR, RCPT, ELEC							2		PADZZ
- 11	22-12-2034	27264	. CONNECTOR, RCPT, ELEC							1		PADZZ
- 12	22-12-2074	27264	. CONNECTOR, RCPT, ELEC							1		PADZZ
- 13	609-1027	15912	. CONNECTOR, RCPT, ELEC							1		PADZZ
- 14	10073-7034	14304	. COIL, RF							3		PADZZ
- 15	MS14046-4	96906	. COIL, RF							1		PADZZ
- 16	RJR24FW502D	81349	. RESISTOR, VARIABLE							1		PADZZ
- 17	RN55D2002F	81349	. RESISTOR FXD FILM							2		PADZZ
- 18	CF07-102J	78488	. RESISTOR, FXD, COMP							8		PADZZ
- 19	CF07-105J	78488	. RESISTOR, FXD, COMP							1		PADZZ
- 20	CF07-182J	78488	. RESISTOR, FXD, COMP							2		PADZZ
- 21	CF07-333J	78488	. RESISTOR, FXD, COMP							1		PADZZ
- 22	4308R-101-103	32997	. RESISTOR, NETWORK							5		PADZZ
- 23	CF07-472J	78488	. RESISTOR, FXD, COMP							2		PADZZ
- 24	CF07-103J	78488	. RESISTOR, FXD, COMP							4		PADZZ
- 25	CF07-473J	78488	. RESISTOR, FXD, COMP							3		PADZZ
- 26	CF07-104J	78488	. RESISTOR, FXD, COMP							2		PADZZ
- 27	4310R-101-103	32997	. RESISTOR, NETWORK							5		PADZZ
- 28	RN55D3322F	81349	. RESISTOR, FXD, COMP							1		PADZZ
- 29	RN55D1002F	81349	. RESISTOR, FXD, FILM							2		PADZZ
- 30	RN55D1003F	81349	. RESISTOR, FXD, FILM							1		PADZZ
- 31	RN55D1001F	81349	. RESISTOR, FXD, FILM							1		PADZZ
- 32	CF07-220J	78488	. RESISTOR, FXD, XOMP							1		PADZZ
- 33	ERD50TJ100	54473	. RESISTOR, FXD, COMP							1		PADZZ
- 34	4306R-102-472	57922	. RESISTOR FXD SIP							2		PADZZ
- 35	TPA11FG-RA6	95146	. SWITCH							1		PADZZ
- 36	TD8088	34649	. MICROCIRCUIT							1		PADZZ
- 37	M38510/32502BRW	81349	. MICROCIRCUIT							1		PADZZ
- 38	10085-9550	14304	. MICROCIRCUIT							1		PADZZ
- 39	M38510/30702BEB	81349	. MICROCIRCUIT							2		PADZZ
- 40	SN54LS138J	01295	. MICROCIRCUIT							1		PADZZ
- 41	M38510/31004BCB	81349	. MICROCIRCUIT							2		PADZZ
- 42	ADC0808CCJ	27014	. MICROCIRCUIT							1		PADZZ
- 43	M38510/30003BCB	81349	. MICROCIRCUIT							4		PADZZ
- 44	SN54LS04J	01295	. MICROCIRCUIT							4		PADZZ

Figure & Index Number	Part Number	FSCM	Description							Units Per Assy	Usable On Code	SMR Code													
			1	2	3	4	5	6	7																
- 45	M38510/11201BCB	81349	.	M	I	C	R	O	C	I	R	C	U	I	T	1	PADZZ								
- 46	SN54LS161AJ	01295	.	M	I	C	R	O	C	I	R	C	U	I	T	1	PADZZ								
- 47	SN54LS92J	01295	.	M	I	C	R	O	C	I	R	C	U	I	T	1	PADZZ								
- 48	CD4020BF	02735	.	M	I	C	R	O	C	I	R	C	U	I	T	1	PADZZ								
- 49	CD4016BF	02735	.	M	I	C	R	O	C	I	R	C	U	I	T	1	PADZZ								
- 50	SN54LS165J	01295	.	M	I	C	R	O	C	I	R	C	U	I	T	2	PADZZ								
- 51	TC5516APL	61802	.	M	I	C	R	O	C	I	R	C	U	I	T	2	PADZZ								
- 52	SN54LS245J	01295	.	M	I	C	R	O	C	I	R	C	U	I	T	2	PADZZ								
- 53	12303713	19207	.	M	I	C	R	O	C	I	R	C	U	I	T	1	PADZZ								
- 54	SN54LS244J	01295	.	M	I	C	R	O	C	I	R	C	U	I	T	1	PADZZ								
- 55	TD8259A	34649	.	M	I	C	R	O	C	I	R	C	U	I	T	1	PADZZ								
- 56	SN54LS74AJ	01295	.	M	I	C	R	O	C	I	R	C	U	I	T	2	PADZZ								
- 57	SN54LS367AJ	01295	.	M	I	C	R	O	C	I	R	C	U	I	T	1	PADZZ								
- 58	SN54LS299J	01295	.	M	I	C	R	O	C	I	R	C	U	I	T	1	PADZZ								
- 59	TD8255A	34649	.	M	I	C	R	O	C	I	R	C	U	I	T	1	PADZZ								
- 60	SN54LS139J	01295	.	M	I	C	R	O	C	I	R	C	U	I	T	2	PADZZ								
- 61	SN54LS00J	01295	.	M	I	C	R	O	C	I	R	C	U	I	T	2	PADZZ								
- 62	SN54LS08J	01295	.	M	I	C	R	O	C	I	R	C	U	I	T	2	PADZZ								
- 63	MC1558U	04713	.	M	I	C	R	O	C	I	R	C	U	I	T	1	PADZZ								
- 64	403897-1	12909	.	M	I	C	R	O	C	I	R	C	U	I	T	2	PADZZ								
- 65	JAN1N759A	81349	.	S	E	M	I	C	O	N	D		D	I	O	1	PADZZ								
- 66	UA78M05HM	07263	.	M	I	C	R	O	C	I	R	C	U	I	T	1	PADZZ								
- 67	540-AG11D	91506	.	C	O	N	N	E	C	T	O	R		R	C	E	P	T		E	L	E	C	1	PADZZ
- 68	528-AG11D	91506	.	C	O	N	N	E	C	T	O	R		R	C	E	P	T		E	L	E	C	3	PADZZ
- 69	MP150	71450	.	C	R	I	S	T	A	L													1	PADZZ	
- 70	10085-9009	14304	.	C	I	R	C	U	I	T		C	A	R	D								1	XA	
- 71	2260R	13103	.	H	E	A	T	S	I	N	K		E	L	E	C	T						1	PADZZ	
- 72	MS35338-135	96906	.	W	A	S	H	E	R														5	PADZZ	
- 73	MS51957-17	96906	.	S	C	R	E	W															5	PADZZ	
- 74	6611-0135	14304	.	R	E	T	A	I	N	E	R												5	PADZZ	
- 75	10085-5156	14304	.	B	U	S	H	I	N	G													5	PADZZ	
- 76	65474-001	00779	.	J	U	M	P	E	R														2	PADZZ	
- 77	65499-102	00779	.	J	A	C	K																2	PADZZ	
- 78	010440B062	13764	.	S	C	R	E	W															3	PADZZ	
- 79	103101	73734	.	N	U	T																	3	PADZZ	
- 80	2717-24850-N126	26344	.	W	A	S	H	E	R														6	PADZZ	
- 81	10085-9570	14304	.	E	P	R	O	M															1	PADZZ	
- 82	10085-9510	14304	.	E	P	R	O	M															1	PADZZ	
- 83	10085-9520	14304	.	E	P	R	O	M															1	PADZZ	
- 84	TD271-28-4	34649	.	E	P	R	O	M															3	PADZZ	



350-125

Figure 7-26. LPA/Coupler Interface PWB Assy, A1A13

NOTE

To find index numbers for circuit board components, use the reference designator index at the end of this chapter. The complete reference designator for a circuit board component consists of "1," followed by the assembly designator (A1A1, A1A2, etc.), then the reference designator on the illustration. For example, the complete reference designator for R25 on the Exciter PWB Assy is 1A1A1 R25.

Figure & Index Number	Part Number	FSCM	Description							Units Per Assy	Usable On Code	SMR Code
			1	2	3	4	5	6	7			
7-26-	10085-7000	14304	CIRCUIT CARD ASSY,A1A13							1		PA0DD
- 1	CK06BX104K	81349	. CAPACITOR, FXD, CER							17		PADZZ
- 2	CK06BX103K	81349	. CAPACITOR, FXD, CER							12		PADZZ
- 3	CK06BX474K	81349	. CAPACITOR, FXD, CER							6		PADZZ
- 4	T392B106M010AS	31433	. CAP, FXD, ELCTLT							2		PADZZ
- 5	JAN1N4454	81349	. SEMICONV DEVICE, DIO							5		PADZZ
- 6	609-1007	59730	. CONNECTOR, RCPT, ELEC							1		PADZZ
- 7	609-2607	15912	. CONNECTOR, RCPT, ELEC							1		PADZZ
- 8	3495-1002	26066	. CONNECTOR, RCPT, ELEC							1		PADZZ
- 9	MS75085-2	96906	. COIL, RF							11		PADZZ
- 10	MS75085-19	96906	. COIL, RF							6		PADZZ
- 11	MS14046-6	96906	. COIL, RF							1		PADZZ
- 12	JAN2N2222A	81349	. TRANSISTOR							5		PADZZ
- 13	2N4236	80131	. TRANSISTOR							1		PADZZ
- 14	CF07-102J	78488	. RESISTOR, FXD, COMP							1		PADZZ
- 15	CF07-121J	78488	. RESISTOR, FXD, COMP							1		PADZZ
- 16	CF07-562J	78488	. RESISTOR, FXD, COMP							4		PADZZ
- 17	ERD50TJ561	54473	. RESISTOR, FXD, COMP							1		PADZZ
- 18	CF07-151J	78488	. RESISTOR, FXD, COMP							1		PADZZ
- 19	CF07-182J	78488	. RESISTOR, FXD, COMP							3		PADZZ
- 20	CF07-103J	78488	. RESISTOR, FXD, COMP							2		PADZZ
- 21	CF07-472J	78488	. RESISTOR, FXD, COMP							1		PADZZ
- 22	4310R-101-471	32997	. RESISTOR NETWORK							1		PADZZ
- 23	CF07-222J	78488	. RESISTOR, FXD, COMP							1		PADZZ
- 24	CF07-512J	78488	. RESISTOR, FXD, COMP							1		PADZZ
- 25	CF07-220J	78488	. RESISTOR, FXD, XOMP							1		PADZZ
- 26	4310R-101-103	32997	. RESISTOR, NETWORK							1		PADZZ
- 27	CF07-3R9J	78488	. RESISTOR, FXD, COMP							1		PADZZ
- 28	SN54LS138J	01295	. MICROCIRCUIT							1		PADZZ
- 29	SN54LS368AJ	01295	. MICROCIRCUIT							1		PADZZ
- 30	SN54LS367AJ	01295	. MICROCIRCUIT							2		PADZZ
- 31	H11L2	03508	. MICROCIRCUIT							1		PADZZ
- 32	SN5416J	01295	. MICROCIRCUIT							1		PADZZ
- 33	CD4021BF	02735	. MICROCIRCUIT							3		PADZZ
- 34	M38510/30005BCB	81349	. MICROCIRCUIT							1		PADZZ
- 35	CD4094BF	02735	. MICROCIRCUIT							2		PADZZ
- 36	IM64021DL	32293	. MICROCIRCUIT							1		PADZZ
- 37	SN54LS74AJ	01295	. MICROCIRCUIT							1		PADZZ
- 38	SN54LS393J	04713	. MICROCIRCUIT							1		PADZZ
- 39	SN54LS04J	01295	. MICROCIRCUIT							1		PADZZ
- 40	CD4001BF	02735	. MICROCIRCUIT							1		PADZZ
- 41	10085-7009	14304	. CIRCUIT CARD							1		XA
- 42	661i-0135	14304	. RETAINER, SCREW							3		PADZZ
- 43	10085-5156	14304	. BUSHING							3		PADZZ
- 44	MS51957-17	96906	. SCREW, MACHINE (AP)							3		PADZZ
- 45	MS35338-135	96906	. WASHER, SPLIT (AP)							3		PADZZ

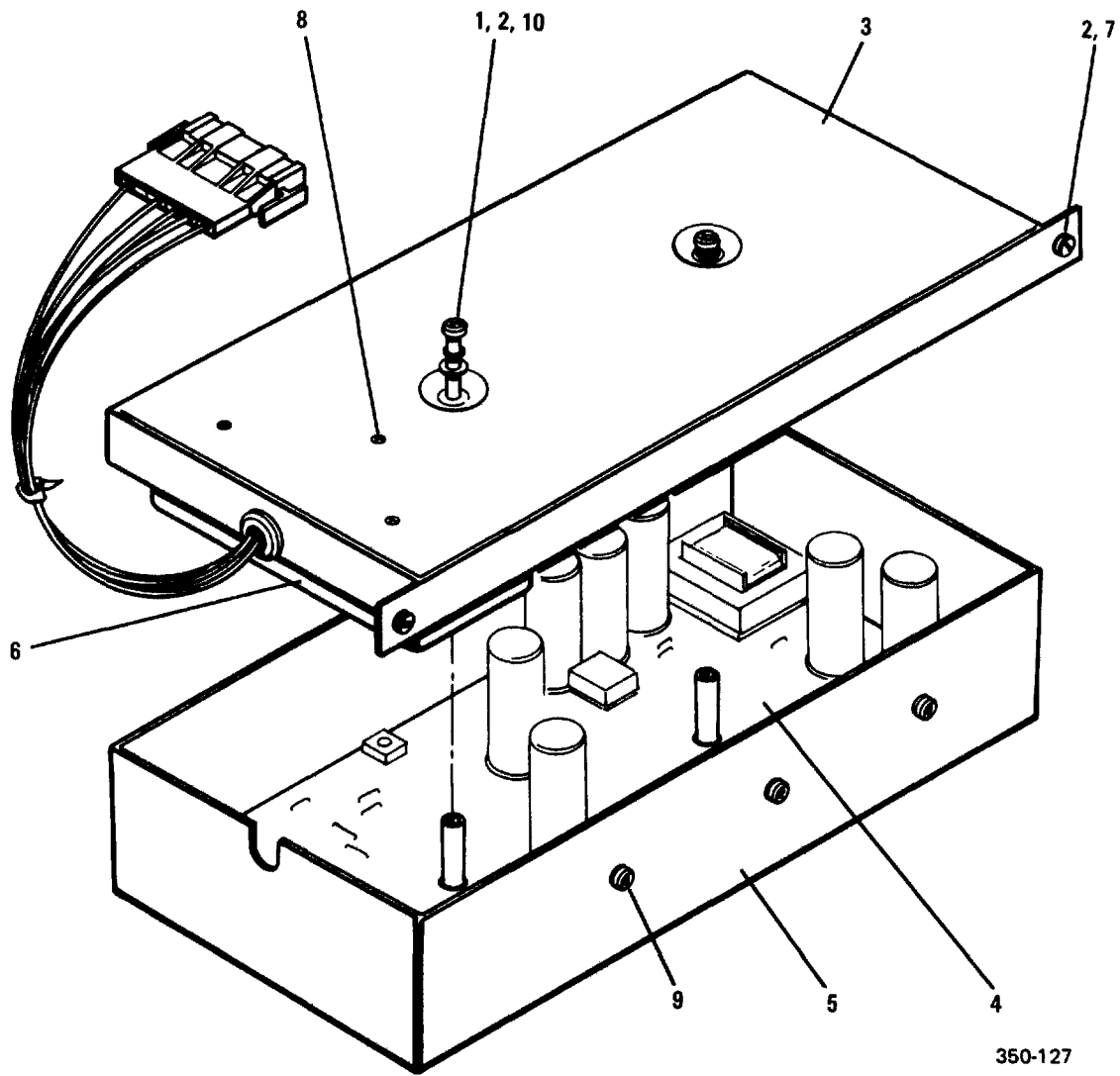


Figure 7-27. Multivoltage Supply Assy, A1A14

NOTE

To find index numbers for circuit board components, use the reference designator index at the end of this chapter. The complete reference designator for a circuit board component consists of "1," followed by the assembly designator (A1A1, A1A2, etc.), then the reference designator on the illustration. For example, the complete reference designator for R25 on the Exciter PWB Assy is 1A1A1 R25.

Figure & Index Number	Part Number	FSCM	Description 1 2 3 4 5 6 7	Units	Usable	SMR Code
				Per Assy	On Code	
7-27-	10085-1240	14304	MULTIVOLT SPLY ASSY,A1A14	1		PAODD
- 1	MS15795-805	96906	. WASHER,FLAT (AP)	2		PADZZ
- 2	MS35338-136	96906	. WASHER,SPLIT (AP)	4		PADZZ
- 3	10085-1209	14304	. COVER	1		XB
- 4	10085-1260	14304	. CIRCUIT CARD ASSY	1		XA
- 5	10085-1247	14304	. CASE	1		XB
- 6	10085-1230	14304	. FILTER ASSY,RF	1		PADZZ
- 7	6232-SS-0632	06540	. SCREW EXT RELIEVED	2		PAOZZ
- 8	MS24693-C16	96906	. SCREW,MACHINE (AP)	3		PAOZZ
- 9	MS51957-28	96906	. SCREW,MACHINE (AP)	3		PADZZ
- 10	10085-5131	14304	. SCREW,MACHINE (AP)	2		PADZZ

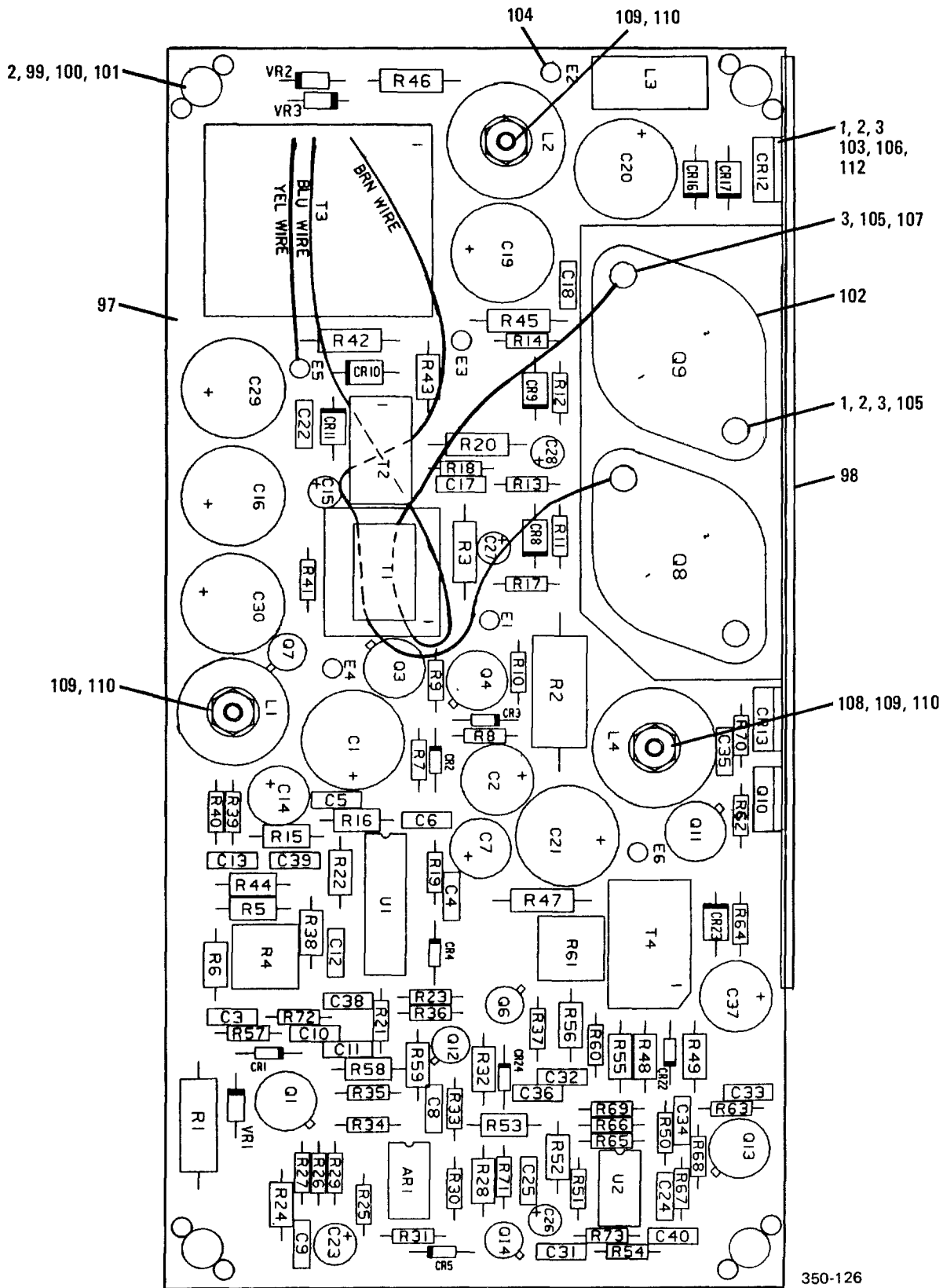


Figure 7-28. Multivoltage Supply PWB Assy, A1A14A1

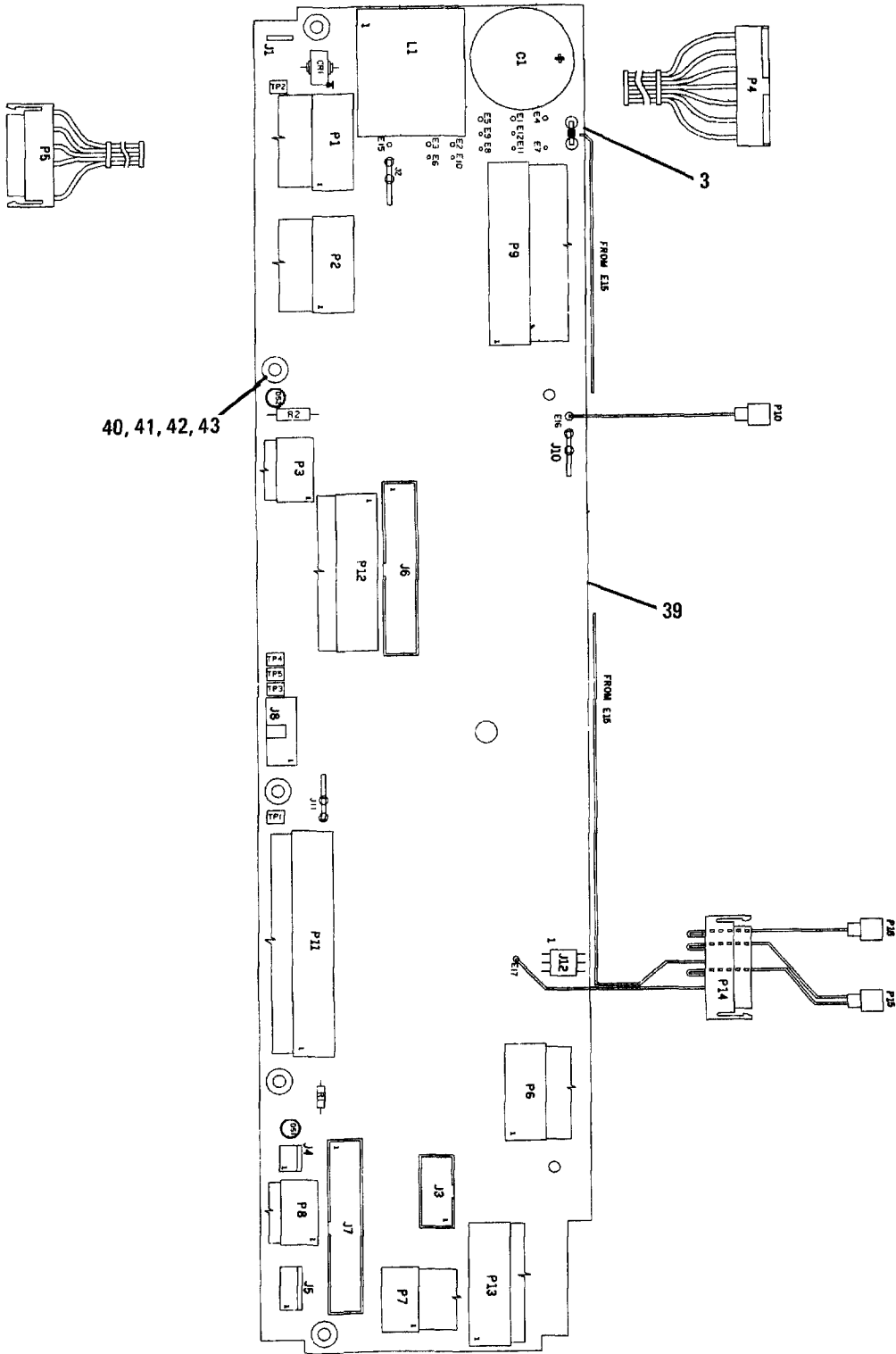
NOTE

To find index numbers for circuit board components, use the reference designator index at the end of this chapter. The complete reference designator for a circuit board component consists of "1," followed by the assembly designator (A1A1, A1A2, etc.), then the reference designator on the illustration. For example, the complete reference designator for R25 on the Exciter PWB Assy is 1A1A1 R25.

Figure & Index Number	Part Number	FSCM	Description							Units Per Assy	Usable On Code	SMR Code
			1	2	3	4	5	6	7			
7-28-	10085-1260	14304	CIRCUIT CARD ASSY, A1A14A1							1		XA
- 1	MS15795-803	96906	. WASHER, FLAT (AP)							5		PADZZ
- 2	MS35338-135	96906	. WASHER, SPLIT (AP)							9		PADZZ
- 3	MS35649-244	96906	. NUT, PLAIN, HEX							7		PADZZ
- 4	MC1558U	04713	. MICROCIRCUIT							1		PADZZ
- 5	672D337H040ET5	56289	. CAP, FXD, ELCTLT							6		PADZZ
- 6	801591-31	96214	. CAP, FXD, ELCTLT							1		PADZZ
- 7	M39014/02-1344	81349	. CAPACITOR, FXD, CER							1		PADZZ
- 8	CKO6BX104K	81349	. CAPACITOR, FXD, CER							6		PADZZ
- 9	0180-2827	28480	. CAP, FXD, ELCTLT							2		PADZZ
- 10	CKO6BX103K	81349	. CAPACITOR, FXD, CER							4		PADZZ
- 11	CK05BX102K	81349	. CAPACITOR, FXD, CER							3		PADZZ
- 12	M39014/02-1340	81349	. CAPACITOR, FXD, CER							1		PADZZ
- 13	CKO6BX474K	81349	. CAPACITOR, FXD, CER							4		PADZZ
- 14	T392D226M025AS	31433	. CAP, FXD, ELCTLT							1		PADZZ
- 15	T392B335M025AS	31433	. CAP, FXD, ELCTLT							2		PADZZ
- 16	672D337H040ET50	56289	. CAP, FXD, ELCTLT							6		PADZZ
- 17	672D108H015ET5C	56289	. CAP, FXD, ELCTLT							1		PADZZ
- 18	M39014/02-1332	81349	. CAPACITOR, FXD, CER							1		PADZZ
- 19	T392C106M025AS	31433	. CAP, FXD, ELCTLT							1		PADZZ
- 20	T392B155M035AS	31433	. CAP, FXD, ELCTLT							2		PADZZ
- 21	CKO6BX223K	81349	. CAPACITOR, FXD, CER							1		PADZZ
- 22	672D476H040CD5C	56289	. CAP, FXD, ELCTLT							2		PADZZ
- 23	CKO6BX332K	81349	. CAPACITOR, FXD, CER							1		PADZZ
- 24	CKO6BX273K	81349	. CAPACITOR, FXD, CER							1		PADZZ
- 25	M39014/02-1335	81349	. CAPACITOR, FXD, CER							1		PADZZ
- 26	JAN1N3611	81349	. SEMICOND DEVICE, DIO							1		PADZZ
- 27	JAN1N4454	81349	. SEMICOND DEVICE, DIO							6		PADZZ
- 28	JAN1N5417	81349	. SEMICOND DEVICE, DIO							7		PADZZ
- 29	RUR-D820	18722	. SEMICOND DEVICE, DIO							1		PADZZ
- 30	VHE1402	27777	. SEMICOND DEVICE, DIO							1		PADZZ
- 31	L13-0002-470	14304	. COIL, RF							1		PADZZ
- 32	L13-0002-331	14304	. COIL, RF							1		PADZZ
- 33	10085-1228	14304	. COIL, RF							1		PADZZ
- 34	10085-1268	14304	. COIL, RF							1		PADZZ
- 35	JAN2N3439	81349	. TRANSISTOR							2		PADZZ
- 36	JAN2N2219A	81349	. TRANSISTOR							2		PADZZ
- 37	JAN2N2222A	81349	. TRANSISTOR							2		PADZZ
- 38	JAN2N6341	81349	. TRANSISTOR							2		PADZZ
- 39	JAN2N6338	81349	. TRANSISTOR							2		PADZZ
- 40	151-0625-00	80009	. TRANSISTOR							1		PADZZ
- 41	2N4236	80131	. TRANSISTOR							1		PADZZ
- 42	JAN2N2907A	81349	. TRANSISTOR							2		PADZZ
- 43	RCR32G102JS	81349	. RESISTOR, FXD, COMP							1		PADZZ
- 44	RCR42G221JS	81349	. RESISTOR, FXD, COMP							1		PADZZ

Figure & Index Number	Part Number	FSCM	Description							Unlts Per Assy	Usable On Code	SMR Code
			1	2	3	4	5	6	7			
- 45	ERD50TJ100	54473	.	RESISTOR	,FXD	,COMP				2		PADZZ
- 46	72PM2K	73138	.	RESISTOR	,VARIABLE					1		PADZZ
- 47	RNC55K1152FS	81349	.	RESISTOR	,FXD	,FILM				1		PADZZ
- 48	RN55K2491FS	81349	.	RESISTOR	,FXD	,FILM				1		PADZZ
- 49	CF07-182J	78488	.	RESISTOR	,FXD	,COMP				2		PADZZ
- 50	CF07-471J	78488	.	RESISTOR	,FXD	,COMP				4		PADZZ
- 51	CF07-220J	78488	.	RESISTOR	,FXD	,XOMP				4		PADZZ
- 52	CF07-6R8J	78488	.	RESISTOR	,FXD	,COMP				2		PADZZ
- 53	RN55D4991F	81349	.	RESISTOR	,FXD	,FILM				2		PADZZ
- 54	CF07-2R7J	78488	.	RESISTOR	,FXD	,COMP				2		PADZZ
- 55	CF07-104J	78488	.	RESISTOR	,FXD	,COMP				2		PADZZ
- 56	CF07-333J	78488	.	RESISTOR	,FXD	,COMP				1		PADZZ
- 57	RN55D2211F	81349	.	RESISTOR	,FXD	,FILM				4		PADZZ
- 58	CF07-272J	78488	.	RESISTOR	,FXD	,COMP				2		PADZZ
- 59	RNC55K1102FS	81349	.	RESISTOR	,FXD	,FILM				1		PADZZ
- 60	CF07-103J	78488	.	RESISTOR	,FXD	,COMP				4		PADZZ
- 61	RN55D6811F	81349	.	RESISTOR	,FXD	,FILM				3		PADZZ
- 62	RN55D1003F	81349	.	RESISTOR	,FXD	,FILM				1		PADZZ
- 63	RNC55K8061FS	81349	.	RESISTOR	,FXD	,FILM				1		PADZZ
- 64	RNC55K2003FS	81349	.	RESISTOR	,FXD	,FILM				1		PADZZ
- 65	RN55D3321F	81349	.	RESISTOR	,FXD	,FILM				1		PADZZ
- 66	CF07-681J	78488	.	RESISTOR	,FXD	,COMP				1		PADZZ
- 67	CF07-102J	78488	.	RESISTOR	,FXD	,COMP				2		PADZZ
- 68	CF07-100J	78488	.	RESISTOR	,FXD	,COMP				3		PADZZ
- 69	RN55D1000F	81349	.	RESISTOR	,FXD	,FILM				1		PADZZ
- 70	CF07-101J	78488	.	RESISTOR	,FXD	,COMP				4		PADZZ
- 71	RNC60K23R7FS	81349	.	RESISTOR	,FXD	,FILM				1		PADZZ
- 72	RNC55K2150FS	81349	.	RESISTOR	,FXD	,FILM				1		PADZZ
- 73	RN55D4750F	81349	.	RESISTOR	,FXD	,COMP				1		PADZZ
- 74	ERD50TJ102	54473	.	RESISTOR	,FXD	,COMP				1		PADZZ
- 75	RLR20C22R1FS	81349	.	RESISTOR	,FXD	,COMP				1		PADZZ
- 76	ERD50TJ271	54473	.	RESISTOR	,FXD	,COMP				1		PADZZ
- 77	RNC55K4640FS	81349	.	RESISTOR	,FXD	,FILM				1		PADZZ
- 78	RN55D8R25F	81349	.	RESISTOR	,FXD	,FILM				1		PADZZ
- 79	CF07-224J	78488	.	RESISTOR	,FXD	,COMP				1		PADZZ
- 80	RN55D4990F	81349	.	RESISTOR	,FXD	,FILM				1		PADZZ
- 81	CF07-222J	78488	.	RESISTOR	,FXD	,COMP				1		PADZZ
- 82	3386B-1-501	32997	.	RESISTOR	,VARIABLE					1		PADZZ
- 83	CF07-221J	78488	.	RESISTOR	,FXD	,COMP				1		PADZZ
- 84	CF07-682J	78488	.	RESISTOR	,FXD	,COMP				1		PADZZ
- 85	CF07-472J	78488	.	RESISTOR	,FXD	,COMP				2		PADZZ
- 86	CF07-332J	78488	.	RESISTOR	,FXD	,COMP				1		PADZZ
- 87	CF07-473J	78488	.	RESISTOR	,FXD	,COMP				1		PADZZ
- 88	10085-1224	14304	.	TRANSFORMER	,RF					1		PADZZ
- 89	51718	61735	.	TRANSFORMER	,RF					1		PADZZ
- 90	10085-1225	14304	.	TRANSFORMER	,RF					1		PADZZ
- 91	10085-1266	14304	.	TRANSFORMER	,RF					1		PADZZ
- 92	SG1524F	18324	.	MICROCIRCUIT						1		PADZZ
- 93	SE5561FE	18324	.	MICROCIRCUIT						1		PADZZ
- 94	1N4743A	81349	.	SEMICOND DEVICE	,DIO					1		PADZZ
- 95	JAN1N4463	81349	.	SEMICOND DEVICE	,DIO					2		PADZZ

Figure & Index Number	Part Number	FSCM	Description 1 2 3 4 5 6 7	Units	Usable	SMR Code
				Per Assy	On Code	
- 96	1N4738A	80131	. SEMICOND DEVICE, DIO	2		PADZZ
- 97	10085-1269	14304	. CIRCUIT CARD	1		XA
- 98	10085-1245	14304	. HEATSINK	1		XB
- 99	6611-0135	14304	. RETAINER, SCREW	4		PADZZ
-100	10085-5156	14304	. BUSHING	4		PADZZ
-101	MS51957-17	96906	. SCREW, MACHINE (AP)	4		PADZZ
-102	43-03-4	13103	. INSULATOR PLATE	2		PADZZ
-103	SM-66-52-14	08289	. INSULATOR PLATE	3		PADZZ
-104	61134-1	00779	. TERMINAL QUICK DISC	6		PADZZ
-105	KFH-440-8	99256	. STUD, CLINCH	6		XB
-106	7721-7PPS	13103	. INSULATOR BUSHING	3		PADZZ
-107	MS77068-1	96906	. TERMINAL, LUG	2		PADZZ
-108	2261-N116	06540	. WASHER, FLAT, NYLON	1		XB
-109	010440B112	73734	. SCREW, MACHINE, NYLON	3		XB
-110	103101	73734	. NUT NONMETALIC	3		PADZZ
-111	61060-1	00779	. TERMINAL	1		PADZZ
-112	MS24693-C5	96906	. SCREW, MACHINE (AP)	3		PAOZZ



350-128

Figure 7-29. Interconnect PWB Assy, A1A15

NOTE

To find index numbers for circuit board components, use the reference designator index at the end of this chapter. The complete reference designator for a circuit board component consists of "1," followed by the assembly designator (A1A1, A1A2, etc.), then the reference designator on the illustration. For example, the complete reference designator for R25 on the Exciter PWB Assy is 1A1A1 R25.

Figure & Index Number	Part Number	FSCM	Description							Units Per Assy	Usable On Code	SMR Code
			1	2	3	4	5	6	7			
7-29-	10085-4210	14304	CIRCUIT CARD ASSY,A1A15							1		PAOLD
- 1	80D222P050KA5	56289	. CAP,FXD,ELCTLT							1		PADZZ
- 2	MR826	04713	. SEMICOND DEVICE,DIO							1		PADZZ
- 3	MS3367-4-9	96906	. STRAP,TIE DOWN							1		PADZZ
- 4	HLMP-3301	50434	. LED							2		PADZZ
- 5	62409-1	00779	. TERMINAL							2		PADZZ
- 6	949	79963	. TERMINAL,MALE							3		PADZZ
- 7	609-1027	15912	. CONNECTOR,RCPT,ELEC							1		PADZZ
- 8	22-11-2032	27264	. CONN RECP ELECT							1		PADZZ
- 9	22-11-2052	27264	. CONNECTOR,RCPT,ELEC							1		PADZZ
- 10	609-3427	15912	. CONNECTOR,RCPT,ELEC							2		PADZZ
- 11	609-1007	59730	. CONNECTOR,RCPT,ELEC							1		PADZZ
- 12	22-12-2034	27264	. CONNECTOR,RCPT,ELEC							1		PADZZ
- 13	10073-3051	14304	. COIL,RF							1		PADZZ
- 14	10085-0332	14304	. CABLE ASSY,RF							1		PADZZ
- 15	10085-0333	14304	. CABLE ASSY,RF							1		PADZZ
- 16	10085-0334	14304	. CABLE ASSY,RF							1		PADZZ
- 17	10085-0337	14304	. CABLE ASSY,RF							1		PADZZ
- 18	10085-0338	14304	. CABLE ASSY,RF							1		PADZZ
- 19	10085-0339	14304	. CABLE ASSY,RF							1		PADZZ
- 20	10085-0340	14304	. CABLE ASSY,RF							1		PADZZ
- 21	2-520184-4	00779	. TERMINAL,FEMALE							1		XB
- 22	10085-0341	14304	. CABLE ASSY,RF							1		PADZZ
- 23	10085-0342	14304	. CABLE ASSY,RF							1		PADZZ
- 24	10085-0343	14304	. CABLE ASSY,RF							1		PADZZ
- 25	3-520117-2	00779	. TERMINAL,FEMALE							1		XB
- 26	61059-1	00779	. TERMINAL,LUG							1		PADZZ
- 27	22-01-3077	27264	. CONNECTOR,PLUG,ELEC							1		PADZZ
- 28	207377-1	00779	. CONNECTOR,RCPT,ELEC							2		PADZZ
- 29	08-56-0110	27264	. CONNECTOR,PLUG,ELEC							7		PADZZ
- 30	66101-3	00779	. CONTACT ELECTRICAL							9		PADZZ
- 31	66100-3	00779	. CONTACT ELECTRICAL							1		PADZZ
- 32	66098-8	00779	. PIN,CRIMP							1		XB
- 33	CF07-271J	78488	. RESISTOR,FXD,COMP							1		PADZZ
- 34	ERD50TJ122	54473	. RESISTOR,FXD,COMP							1		PADZZ
- 35	105-1102-001	74970	. JACK,TIP							1		PADZZ
- 36	105-1106-001	74970	. JACK,TIP							1		PADZZ
- 37	105-1107-001	74970	. JACK,TIP							1		PADZZ
- 38	105-1104-001	74970	. JACK,TIP							1		PADZZ
- 39	10085-4219	14304	. CIRCUIT CARD							1		XA
- 40	6611-0135	14304	. RETAINER,SCREW							5		PADZZ
- 41	10085-5156	14304	. BUSHING							5		PADZZ
- 42	MS51957-17	96906	. SCREW,MACHINE (AP)							5		PADZZ
- 43	MS35338-135	96906	. WASHER,SPLIT (AP)							5		PADZZ

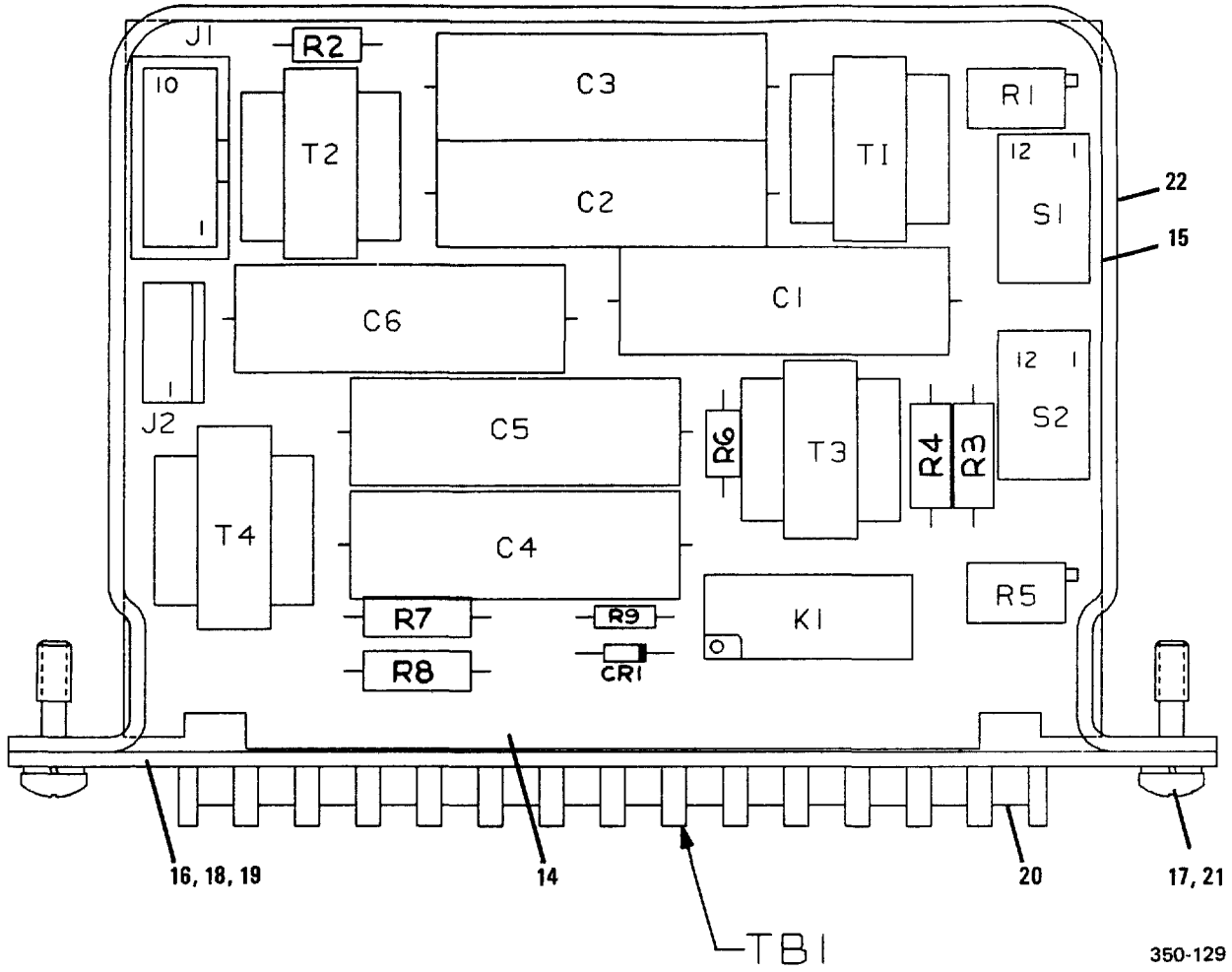


Figure 7-30. Audio Interface PWB Assy, A1A16

NOTE

To find index numbers for circuit board components, use the reference designator index at the end of this chapter. The complete reference designator for a circuit board component consists of "1," followed by the assembly designator (A1A1, A1A2, etc.), then the reference designator on the illustration. For example, the complete reference designator for R25 on the Exciter PWB Assy is 1A1A1 R25.

Figure & Index Number	Part Number	FSCM	Description							Units Per Assy	Usable On Code	SMR Code
			1	2	3	4	5	6	7			
7-30-	10085-0570	14304	CIRCUIT CARD ASSY,A1A16							1		PA0DD
- 1	JAN1N4454	81349	. SEMICOND DEVICE,DIO							1		PADZZ
- 2	7FR2052B	54904	. CAPACITOR,FXD,MYLAR							6		PADZZ
- 3	609-1027	15912	. CONNECTOR,RCPT,ELEC							1		PADZZ
- 4	22-11-2052	27264	. CONNECTOR,RCPT,ELEC							1		PADZZ
- 5	K-0118	14304	. RELAY							1		PADZZ
- 6	68XR2K	73138	. RESISTOR,VARIABLE							2		PADZZ
- 7	RN55D6040F	81349	. RESISTOR,FXD,FILM							2		PADZZ
- 8	RNC60K3010FS	81349	. RESISTOR,FXD,FILM							4		PADZZ
- 9	RN60D3010F	81349	. RESISTOR,FXD,FILM							4		PADZZ
- 10	CF07-680J	78488	. RESISTOR,FXD,COMP							1		PADZZ
- 11	MSS-4200	95146	. SWITCH							2		PADZZ
- 12	T-2220	26667	. TRANSFORMER,RF							4		PADZZ
- 13	SEPX-12	94464	. TERMINAL,STRIP							1		XB
- 14	10085-0579	14304	. CIRCUIT CARD							1		XA
- 15	10085-0576	14304	. RETAINER							1		XB
- 16	10085-0577	14304	. HOLDER,TERMINAL BLOCK							1		XA
- 17	10085-5131	14304	. SCREW,MACHINE (AP)							2		PADZZ
- 18	MS35338-134	96906	. WASHER,SPLIT (AP)							4		PADZZ
- 19	MS51957-2	96906	. SCREW,MACHINE (AP)							4		PAOZZ
- 20	MS51957-3	96906	. SCREW,MACHINE (AP)							2		PAOZZ
- 21	MS35338-136	96906	. WASHER,SPLIT (AP)							2		PADZZ
- 22	10085-0578	14304	. LABEL							1		MDO

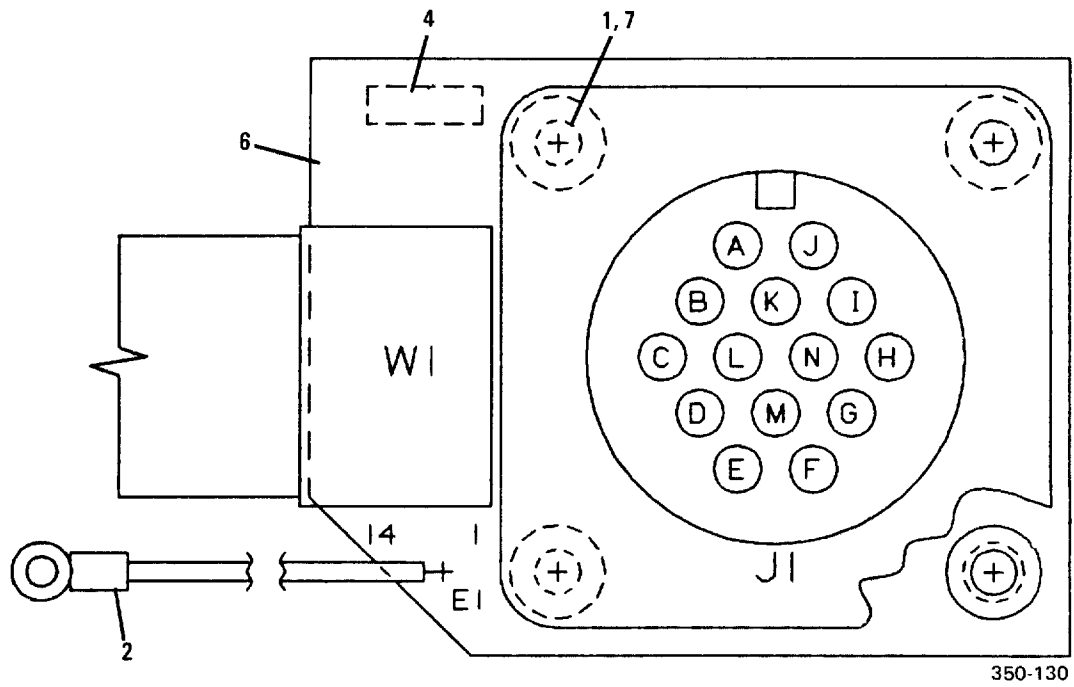
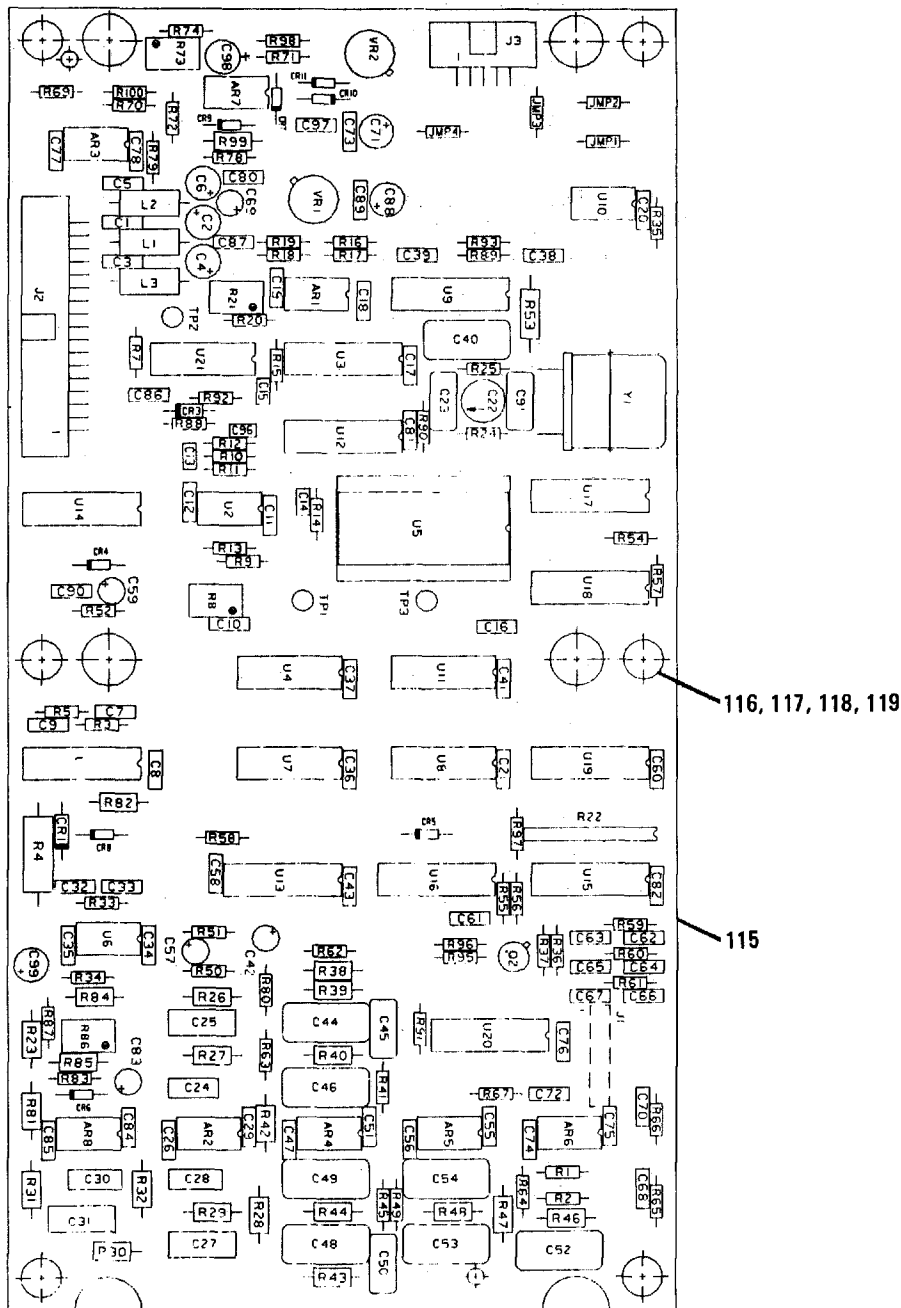


Figure 7-31. Coupler Connector PWB Assy, A1A17

NOTE

To find index numbers for circuit board components, use the reference designator index at the end of this chapter. The complete reference designator for a circuit board component consists of "1," followed by the assembly designator (A1A1, A1A2, etc.), then the reference designator on the illustration. For example, the complete reference designator for R25 on the Exciter PWB Assy is 1A1A1 R25.

Figure & Index Number	Part Number	FSCM	Description							Units Per Assy	Usable On Code	SMR Code
			1	2	3	4	5	6	7			
7-31-	10085-0550	14304	CIRCUIT CARD ASSY,A1A17							1		PAOLD
- 1	KFB3-440-16ET	06540	. SPACER							4		XB
- 2	61306	79061	. TERMINAL							1		PADZZ
- 3	MS3102R20-27S	96906	. CONNECTOR,RCPT,ELEC							1		PADZZ
- 4	62409-1	00779	. TERMINAL							1		PADZZ
- 5	10085-0347	14304	. CABLE ASSY,RF							1		PADZZ
- 6	10085-0559	14304	. CIRCUIT CARD							1		XA
- 7	KFB3-440-6-HS	99256	. SPACER							4		XB



350-131

Figure 7-32. AFSK Keyer/Converter PWB Assy, A1A18A1

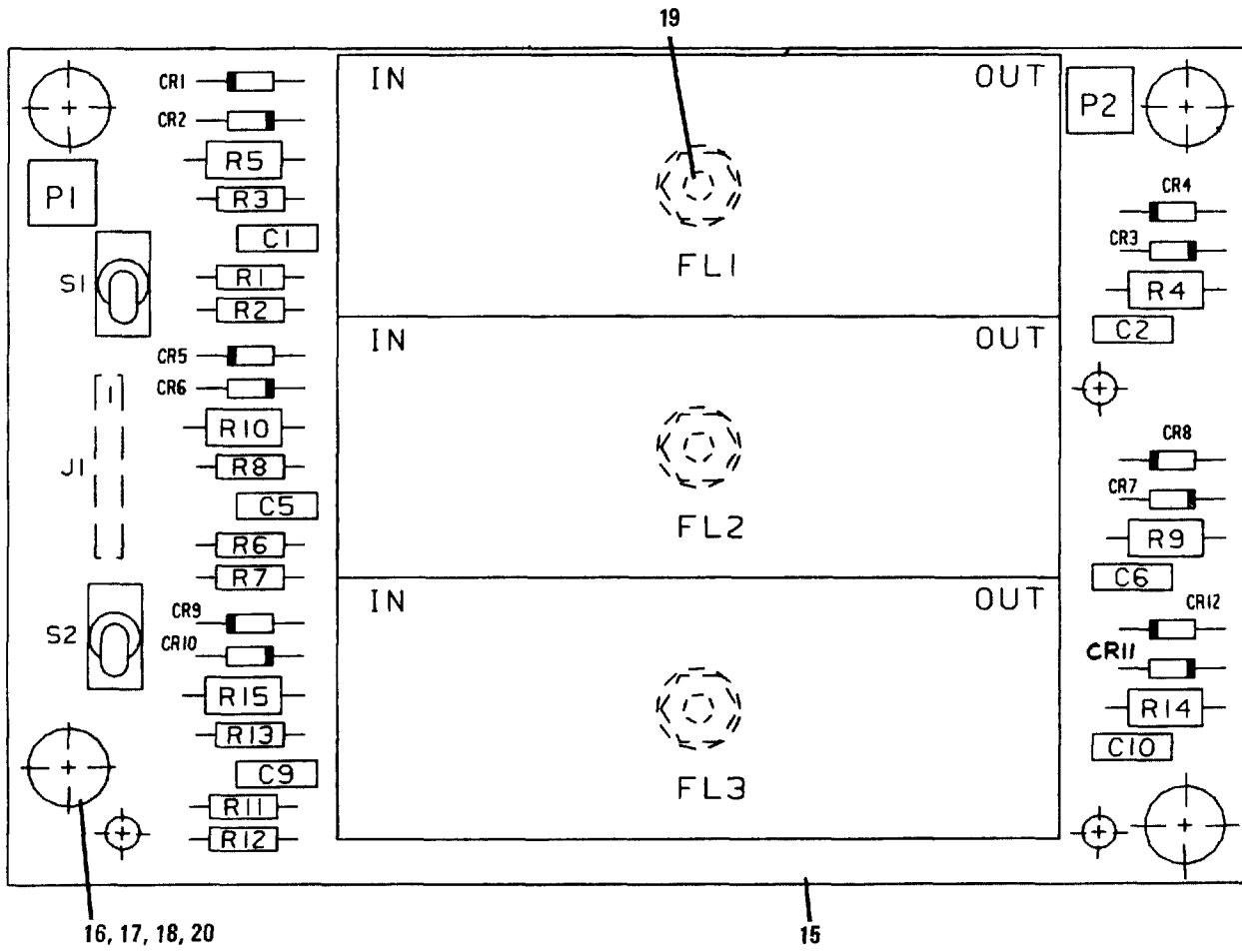
NOTE

To find index numbers for circuit board components, use the reference designator index at the end of this chapter. The complete reference designator for a circuit board component consists of "1," followed by the assembly designator (A1A1, A1A2, etc.), then the reference designator on the illustration. For example, the complete reference designator for R25 on the Exciter PWB Assy is 1A1A1 R25.

Figure & Index Number	Part Number	FSCM	Description							Units Per Assy	Usable On Code	SMR Code
			1	2	3	4	5	6	7			
7-32-	10085-6100	14304	KY/CONV, AFSK ASSY, A1A18A1							1		XA
- 1	LM218J-8	27014	. MICROCIRCUIT							1		PADZZ
- 2	MC1558U	04713	. MICROCIRCUIT							7		PADZZ
- 3	M39014/02-1350	81349	. CAPACITOR, FXD, CER							44		PADZZ
- 4	T392C106M025AS	31433	. CAP, FXD, ELCTLT							6		PADZZ
- 5	CK06BX104K	81349	. CAPACITOR, FXD, CER							44		PADZZ
- 6	M39014/02-1338	81349	. CAPACITOR, FXD, CER							5		PADZZ
- 7	M39014/01-1357	81349	. CAPACITOR, FXD, CER							4		PADZZ
- 8	CK05BX102K	81349	. CAPACITOR, FXD, CER							5		PADZZ
- 9	CV31E600	81349	. CAPACITOR, VARIABLE							1		PADZZ
- 10	CMR05C150J0DR	81349	. CAPACITOR, FXD, MICA							1		PADZZ
- 11	C330C223J1G5CA	31433	. CAPACITOR, FXD, CER							1		PADZZ
- 12	C350C104J1G5CA	31433	. CAPACITOR, FXD, CER							3		PADZZ
- 13	C340C473J1G5CA	31433	. CAPACITOR, FXD, CER							2		PADZZ
- 14	CK06BX103K	81349	. CAPACITOR, FXD, CER							5		PADZZ
- 15	CMR06F392G0DR	81349	. CAPACITOR, FXD, MICA							3		PADZZ
- 16	T392B335M025AS	31433	. CAP, FXD, ELCTLT							4		PADZZ
- 17	CMR06F182G0DR	81349	. CAPACITOR, FXD, MICA							1		PADZZ
- 18	CMR05F161G0DR	81349	. CAPACITOR, FXD, MICA							1		PADZZ
- 19	CMR06F222G0DR	81349	. CAPACITOR, FXD, MICA							1		PADZZ
- 20	CM06FD392J03	81349	. CAPACITOR, FXD, MICA							3		PADZZ
- 21	CMR05F331G0DR	81349	. CAPACITOR, FXD, MICA							1		PADZZ
- 22	CMR06F362G0DR	81349	. CAPACITOR, FXD, MICA							1		PADZZ
- 23	CMR06F432G0DR	81349	. CAPACITOR, FXD, MICA							1		PADZZ
- 24	CMR06F431G0DR	81349	. CAPACITOR, FXD, MICA							1		PADZZ
- 25	M39014/02-1360	81349	. CAPACITOR, FXD, CER							9		PADZZ
- 26	CK06BX474K	81349	. CAPACITOR, FXD, CER							9		PADZZ
- 27	T392B155M035AS	31433	. CAP, FXD, ELCTLC							1		PADZZ
- 28	M39014/02-1358	81349	. CAPACITOR, FXD, CER							1		PADZZ
- 29	CMR05E430G0DR	81349	. CAPACITOR, FXD, MICA							1		PADZZ
- 30	T392D226M025AS	31433	. CAP, FXD, ELCTLT							1		PADZZ
- 31	JAN1N751A	81349	. SEMICOND DEVICE, DIO							1		PADZZ
- 32	JAN1N750A	81349	. SEMICOND DEVICE, DIO							1		PADZZ
- 33	JAN1N4454	81349	. SEMICOND DEVICE							8		PADZZ
- 34	MP-1142	14304	. JUMPER ELECTRICAL							4		XB
- 35	372-2333-020	13499	. CONNECTOR, RCPT, ELEC							1		PADZZ
- 36	609-3407	15912	. CONNECTOR, PLUG, ELEC							1		PADZZ
- 37	609-1007	59730	. CONNECTOR, PLUG, ELEC							1		PADZZ
- 38	MS14046-8	96906	. TRANSFORMER, RF							2		PADZZ
- 39	MS14046-1	96906	. TRANSFORMER, RF							1		PADZZ
- 40	JAN2N2907A	81349	. TRANSISTOR							1		PADZZ
- 41	CF07-153J	78488	. RESISTOR, FXD, COMP							3		PADZZ
- 42	CF07-272J	78488	. RESISTOR, FXD, COMP							1		PADZZ
- 43	CF07-473J	78488	. RESISTOR, FXD, COMP							5		PADZZ
- 44	RCR32G221JS	81349	. RESISTOR, FXD, COMP							1		PADZZ

Figure & Index Number	Part Number	FSCM	Description							Units Per Assy	Usable On Code	SMR Code
			1	2	3	4	5	6	7			
- 45	CF07-102J	78488	.	RESISTOR	,FXD	,COMP				8		PADZZ
- 46	RJR24FW502P	81349	.	RESISTOR	,VARIABLE					3		PADZZ
- 47	CF07-303J	78488	.	RESISTOR	,FXD	,COMP				1		PADZZ
- 48	CF07-392J	78488	.	RESISTOR	,FXD	,COMP				2		PADZZ
- 49	CF07-103J	78488	.	RESISTOR	,FXD	,COMP				13		PADZZ
- 50	CF07-183J	78488	.	RESISTOR	,FXD	,COMP				2		PADZZ
- 51	CF07-154J	78488	.	RESISTOR	,FXD	,COMP				2		PADZZ
- 52	CF07-223J	78488	.	RESISTOR	,FXD	,COMP				4		PADZZ
- 53	CF07-561J	78488	.	RESISTOR	,FXD	,COMP				1		PADZZ
- 54	3299W-1-502	57921	.	RESISTOR	,VARIABLE					3		PADZZ
- 55	4310R-101-103	32997	.	RESISTOR NETWORK						1		PADZZ
- 56	RNC55K1002FS	81349	.	RESISTOR	,FXD	,FILM				1		PADZZ
- 57	CF07-472J	78488	.	RESISTOR	,FXD	,COMP				2		PADZZ
- 58	RCR07G106JM	81349	.	RESISTOR	,FXD	,COMP				1		PADZZ
- 59	RNC55K1652FS	81349	.	RESISTOR	,FXD	,FILM				1		PADZZ
- 60	RNC55K3092FS	81349	.	RESISTOR	,FXD	,FILM				1		PADZZ
- 61	RNC55K7501FS	81349	.	RESISTOR	,FXD	,FILM				1		PADZZ
- 62	RNC55K4422FS	81349	.	RESISTOR	,FXD	,FILM				1		PADZZ
- 63	RNC55K9531FS	81349	.	RESISTOR	,FXD	,FILM				1		PADZZ
- 64	RNC55K3242FS	81349	.	RESISTOR	,FXD	,FILM				2		PADZZ
- 65	RNC55K1502FS	81349	.	RESISTOR	,FXD	,FILM				1		PADZZ
- 66	CF07-101J	78488	.	RESISTOR	,FXD	,COMP				7		PADZZ
- 67	CF07-104J	78488	.	RESISTOR	,FXD	,COMP				3		PADZZ
- 68	RN55D3242F	81349	.	RESISTOR	,FXD	,FILM				2		PADZZ
- 69	RN55K6812FS	81349	.	RESISTOR	,FXD	,FILM				2		PADZZ
- 70	RNC55K5622FS	81349	.	RESISTOR	,FXD	,FILM				1		PADZZ
- 71	RNC55K3162FS	81349	.	RESISTOR	,FXD	,FILM				1		PADZZ
- 72	RNC55K6042FS	81349	.	RESISTOR	,FXD	,FILM				1		PADZZ
- 73	RNC55K5492FS	81349	.	RESISTOR	,FXD	,FILM				1		PADZZ
- 74	RN55D6812F	81349	.	RESISTOR	,FXD	,FILM				2		PADZZ
- 75	RNC55K1473FS	81349	.	RESISTOR	,FXD	,FILM				1		PADZZ
- 76	RNC55K8252FS	81349	.	RESISTOR	,FXD	,FILM				1		PADZZ
- 77	CF07-222J	78488	.	RESISTOR	,FXD	,COMP				1		PADZZ
- 78	ERD50TJ101	54473	.	RESISTOR	,FXD	,COMP				1		PADZZ
- 79	CF07-203J	78488	.	RESISTOR	,FXD	,COMP				4		PADZZ
- 80	CF07-332J	78488	.	RESISTOR	,FXD	,COMP				1		PADZZ
- 81	CF07-333J	78488	.	RESISTOR	,FXD	,COMP				1		PADZZ
- 82	CF07-121J	78488	.	RESISTOR	,FXD	,COMP				1		PADZZ
- 83	RNC55K1962FS	81349	.	RESISTOR	,FXD	,FILM				1		PADZZ
- 84	RNC55K4421FS	81349	.	RESISTOR	,FXD	,FILM				1		PADZZ
- 85	RNC55K1821FS	81349	.	RESISTOR	,FXD	,FILM				1		PADZZ
- 86	RNC55K8251FS	81349	.	RESISTOR	,FXD	,FILM				1		PADZZ
- 87	RJR24FW503P	81349	.	RESISTOR	,VARIABLE					1		PADZZ
- 88	CF07-100J	78488	.	RESISTOR	,FXD	,COMP				1		PADZZ
- 89	RNC55K2493FS	81349	.	RESISTOR	,FXD	,FILM				1		PADZZ
- 90	105-0858-001	74970	.	JACK	,TIP					1		PADZZ
- 91	105-0852-001	74970	.	JACK	,TIP					1		PADZZ
- 92	1168004P6	94117	.	JACK	,TIP					1		PADZZ
- 93	351-8434-010	13499	.	MICROCIRCUIT						1		PADZZ
- 94	LM111J-8	27014	.	MICROCIRCUIT						2		PADZZ
- 95	7901401EB	14933	.	MICROCIRCUIT						2		PADZZ

Figure & Index Number	Part Number	FSCM	Description							Units Per Assy	Usable On Code	SMR Code									
			1	2	3	4	5	6	7												
- 96	M38510/17203BCB	81249	.	M	I	C	R	O	C	I	R	C	U	I	1	PADZZ					
- 97	TD8253	34649	.	M	I	C	R	O	C	I	R	C	U	I	1	PADZZ					
- 98	M38510/17103BCB	81349	.	M	I	C	R	O	C	I	R	C	U	I	1	PADZZ					
- 99	CD4011BD/3	02735	.	M	I	C	R	O	C	I	R	C	U	I	2	PADZZ					
-100	DS1692J	12040	.	M	I	C	R	O	C	I	R	C	U	I	1	PADZZ					
-101	UA9637ARM	07263	.	M	I	C	R	O	C	I	R	C	U	I	1	PADZZ					
-102	7901101CB	14933	.	M	I	C	R	O	C	I	R	C	U	I	1	PADZZ					
-103	CD4049UBF	02735	.	M	I	C	R	O	C	I	R	C	U	I	2	PADZZ					
-104	CD4051BD/3	02735	.	M	I	C	R	O	C	I	R	C	U	I	1	PADZZ					
-105	M38510/30701BEB	81349	.	M	I	C	R	O	C	I	R	C	U	I	1	PADZZ					
-106	CD4021BF	02735	.	M	I	C	R	O	C	I	R	C	U	I	1	PADZZ					
-107	CD4094BF	02735	.	M	I	C	R	O	C	I	R	C	U	I	3	PADZZ					
-108	M38510/32204BEB	81349	.	M	I	C	R	O	C	I	R	C	U	I	1	PADZZ					
-109	7704701EB	14933	.	M	I	C	R	O	C	I	R	C	U	I	1	PADZZ					
-110	CD4011BF	02735	.	M	I	C	R	O	C	I	R	C	U	I	2	PADZZ					
-111	M38510/10703BXC	81349	.	M	I	C	R	O	C	I	R	C	U	I	1	PADZZ					
-112	M38510/11502BXC	81349	.	M	I	C	R	O	C	I	R	C	U	I	1	PADZZ					
-113	524-AG11D	91506	.	S	O	C	K	E	T	P	L	U	G	I	N	E	L	E	C	1	PADZZ
-114	10085-6170	14304	.	O	S	C	I	L	A	T	O	R	,R	F	1	PADZZ					
-115	10085-6109	14304	.	P	W	B	,K	Y	/C	O	N	V	,A	F	S	K	1	XA			
-116	6611-0135	14304	.	R	E	T	A	I	N	E	R	6	XB								
-117	10085-5156	14304	.	S	P	A	C	E	R	S	L	E	E	V	E	6	XB				
-118	MS35338-135	96906	.	W	A	S	H	E	R	L	O	C	6	PAOZZ							
-119	MS51957-17	96906	.	S	C	R	E	W	M	A	C	H	I	N	E	6	PAOZZ				



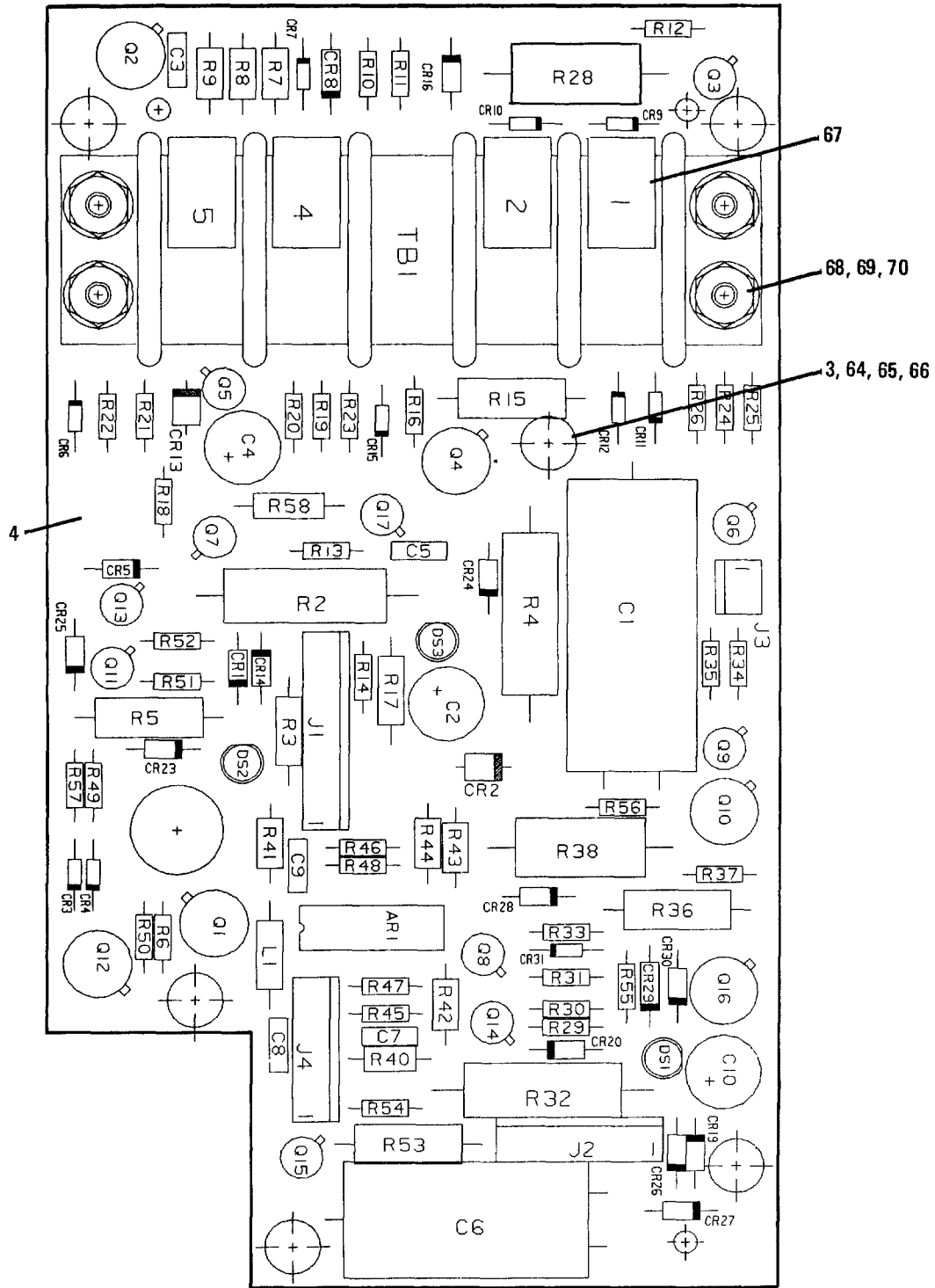
350-132

Figure 7-33. AFSK IF Filter PWB Assy, A1A18A2

NOTE

To find index numbers for circuit board components, use the reference designator index at the end of this chapter. The complete reference designator for a circuit board component consists of "1," followed by the assembly designator (A1A1, A1A2, etc.), then the reference designator on the illustration. For example, the complete reference designator for R25 on the Exciter PWB Assy is 1A1A1 R25.

Figure & Index Number	Part Number	FSCM	Description							Units Per Assy	Usable On Code	SMR Code
			1	2	3	4	5	6	7			
7-33-	10085-6200	14304	IF/FLTR,AFSK ASSY,A1A18A2							1		XA
- 1	CK06BX474K	81349	. CAPACITOR, FXD, CER							6		PADZZ
- 2	JAN1N4454	81349	. SEMICONV DEVICE							12		PADZZ
- 3	10085-6120	14304	. FILTER,RF1							1		PADZZ
- 4	10085-6140	14304	. FILTER,RF1							1		PADZZ
- 5	10085-6160	14304	. FILTER,RF1							1		PADZZ
- 6	65507-107	22526	. CONNECTOR, PLUG, ELEC							1		PADZZ
- 7	CF07-101J	78488	. RESISTOR, FXD, COMP							3		PADZZ
- 8	CF07-102J	78488	. RESISTOR, FXD, COMP							3		PADZZ
- 9	CF07-222J	78488	. RESISTOR, FXD, COMP							3		PADZZ
- 10	RN55D1002F	81349	. RESISTOR, FXD, FILM							3		PADZZ
- 11	RNC55K5111FS	81349	. RESISTOR, FXD, FILM							3		PADZZ
- 12	RN55D5111F	81349	. RESISTOR, FXD, FILM							3		PADZZ
- 13	T103LH9V3BE	09353	. SWITCH TOGGLE							1		PADZZ
- 14	T101LH9V3BE	09353	. SWITCH TOGGLE							1		PADZZ
- 15	10085-6209	14304	. PWB, 1F/FLTR, AFSK							1		XA
- 16	10085-5156	14304	. SPACER SLEEVE							4		PADZZ
- 17	MS35338-135	96906	. WASHER LOCK							4		PADZZ
- 18	MS51957-17	96906	. SCREW MACHINE							4		PADZZ
- 19	H-6769	14304	. NUT, CLINCH							3		XB
- 20	6611-0135	14304	. RETAINER							4		PADZZ
- 21	51-328-3188-22G	98291	. CONNECTOR							2		PADZZ
- 22	D-607-09	06090	. CONTACT ELECT							2		PADZZ



350-133

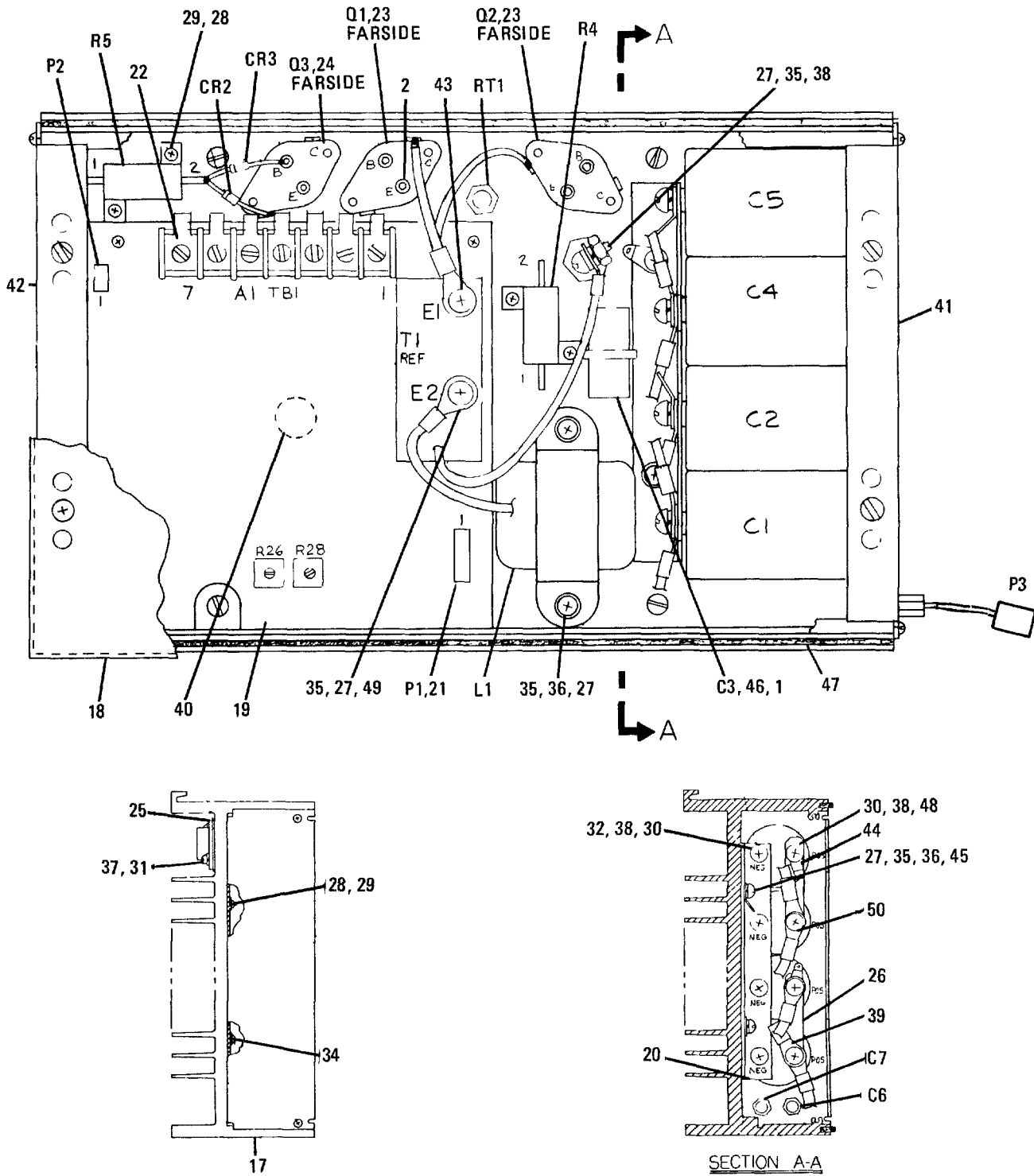
Figure 7-34. Power Supply Protection and Control PWB Assy, A2A1

NOTE

To find index numbers for circuit board components, use the reference designator index at the end of this chapter. The complete reference designator for a circuit board component consists of "1," followed by the assembly designator (A1A1, A1A2, etc.), then the reference designator on the illustration. For example, the complete reference designator for R25 on the Exciter PWB Assy is 1A1A1 R25.

Figure & Index Number	Part Number	FSCM	Description							Units Per Assy	Usable On Code	SMR Code
			1	2	3	4	5	6	7			
7-34-	10085-0290	14304	CIRCUIT CARD ASSY, A2A1							1		PAODD
- 1	LM2901F	18324	. MICROCIRCUIT							1		PADZZ
- 2	672D477H050FV5J	56289	. CAP, FXD, ELCTLT							1		PADZZ
- 3	10085-5156	14304	. BUSHING							6		PADZZ
- 4	10085-0299	14304	. CIRCUIT CARD							1		XA
- 5	672D476H040CD5C	56289	. CAP, FXD, ELCTLT							1		PADZZ
- 6	CK06BX104K	81349	. CAPACITOR, FXD, CER							5		PADZZ
- 7	672D686H025CD5C	56289	. CAP, FXD, ELCTLT							1		PADZZ
- 8	672D337H040ET5J	56289	. CAP, FXD, ELCTLT							1		PADZZ
- 9	SM-A-915742-1	80063	. CAP, FXD, ELCTLT							1		PADZZ
- 10	JAN1N3611	81349	. SEMICOND DEVICE, DIO							11		PADZZ
- 11	JAN1N5417	81349	. SEMICOND DEVICE, DIO							1		PADZZ
- 12	JAN1N4454	81349	. SEMICOND DEVICE, DIO							10		PADZZ
- 13	JAN1N752A	81349	. SEMICOND DEVICE, DIO							1		PADZZ
- 14	JAN1N759A	81349	. SEMICOND DEVICE, DIO							1		PADZZ
- 15	HLMP-3301	50434	. LED							1		PADZZ
- 16	1N5311	81349	. SEMICOND DEVICE, DIO							1		PADZZ
- 17	1N4738A	80131	. SEMICOND DEVICE, DIO							1		PADZZ
- 18	22-11-2112	27264	. CONNECTOR, RCPT, ELEC							1		PADZZ
- 19	22-11-2092	27264	. CONNECTOR, RCPT, ELEC							1		PADZZ
- 20	22-11-2032	27264	. CONN RECP ELECT							1		PADZZ
- 21	22-11-2082	27264	. CONNECTOR, RCPT, ELEC							1		PADZZ
- 22	MS90539-3	96906	. COIL, RF							1		PADZZ
- 23	JAN2N3439	81349	. TRANSISTOR							5		PADZZ
- 24	JAN2N2222A	81349	. TRANSISTOR							6		PADZZ
- 25	2N5859	80131	. TRANSISTOR							1		PADZZ
- 26	JAN2N2907A	81349	. TRANSISTOR							5		PADZZ
- 27	RW74U7OROF	81349	. RESISTOR, FXD, WW							1		PADZZ
- 28	ERD50TJ152	54473	. RESISTOR, FXD, COMP							1		PADZZ
- 29	RWR745R00FR	81349	. RESISTOR, FXD, WW							1		PADZZ
- 30	RCR32G332JS	81349	. RESISTOR, FXD, COMP							1		PADZZ
- 31	CF07-471J	78488	. RESISTOR, FXD, COMP							2		PADZZ
- 32	RN55D8451F	81349	. RESISTOR FXD FILM							1		PADZZ
- 33	RN55D4321F	81349	. RESISTOR, FXD, FILM							1		PADZZ
- 34	RN55D2001F	81349	. RESISTOR, FXD, FILM							1		PADZZ
- 35	CF07-101J	78488	. RESISTOR, FXD, COMP							2		PADZZ
- 36	CF07-102J	78488	. RESISTOR, FXD, COMP							7		PADZZ
- 37	CF07-273J	78488	. RESISTOR, FXD, COMP							2		PADZZ
- 38	CF07-390J	78488	. RESISTOR, FXD, COMP							1		PADZZ
- 39	RCR32G821JS	81349	. RESISTOR, FXD, COMP							1		PADZZ
- 40	ERD50TJ182	54473	. RESISTOR, FXD, COMP							1		PADZZ
- 41	CF07-472J	78488	. RESISTOR, FXD, COMP							2		PADZZ
- 42	CF07-470J	78488	. RESISTOR, FXD, COMP							2		PADZZ
- 43	CF07-103J	78488	. RESISTOR, FXD, COMP							6		PADZZ
- 44	CF07-222J	78488	. RESISTOR, FXD, COMP							2		PADZZ

Figure & Index Number	Part Number	FSCM	Description							Units Per Assy	Usable On Code	SMR Code
			1	2	3	4	5	6	7			
- 45	CF07-223J	78488	.	RESISTOR	,FXD	,COMP				1		PADZZ
- 46	RCR42G100JM	81349	.	RESISTOR	,FXD	,COMP				1		PADZZ
- 47	CF07-562J	78488	.	RESISTOR	,FXD	,COMP				1		PADZZ
- 48	RWR74S1000FS	81349	.	RESISTOR	,FXD	,FILM				1		PADZZ
- 49	CF07-393J	78488	.	RESISTOR	,FXD	,COMP				1		PADZZ
- 50	CF07-272J	78488	.	RESISTOR	,FXD	,COMP				1		PADZZ
- 51	RCR32G271JS	81349	.	RESISTOR	,FXD	,COMP				1		PADZZ
- 52	CF07-221J	78488	.	RESISTOR	,FXD	,COMP				1		PADZZ
- 53	RCR42G180JS	81349	.	RESISTOR	,FXD	,COMP				1		PADZZ
- 54	RN55D4991F	81349	.	RESISTOR	,FXD	,FILM				1		PADZZ
- 55	RN55D1002F	81349	.	RESISTOR	,FXD	,FILM				1		PADZZ
- 56	RN55D3482F	81349	.	RESISTOR	,FXD	,FILM				1		PADZZ
- 57	RN55D2002F	81349	.	RESISTOR	FXD	FILM				2		PADZZ
- 58	CF07-105J	78488	.	RESISTOR	,FXD	,COMP				2		PADZZ
- 59	CF07-512J	78488	.	RESISTOR	,FXD	,COMP				1		PADZZ
- 60	CF07-561J	78488	.	RESISTOR	,FXD	,COMP				1		PADZZ
- 61	RCR32G102JM	81349	.	RESISTOR	,FXD	,COMP				1		PADZZ
- 62	ERD50TJ682	54473	.	RESISTOR	,FXD	,COMP				1		PADZZ
- 63	39TB5	81349	.	TERMINAL						1		PADZZ
- 64	6611-0135	14304	.	RETAINER	,SCREW					6		PADZZ
- 65	MS51957-17	96906	.	SCREW	,MACHINE	(AP)				6		PADZZ
- 66	MS35338-135	96906	.	WASHER	,SPLIT	(AP)				6		PADZZ
- 67	10085-0284	14304	.	BRACKET	,ANGLE					4		XB
- 68	H-6767	14304	.	NUT	PLAIN	HEX				4		XB
- 69	MS51957-48	96906	.	SCREW	,MACHINE	(AP)				4		PAOZZ
- 70	MS15795-807	96906	.	WASHER	,FLAT	(AP)				4		PADZZ



350-134

Figure 7-35. 13.6 V Power Supply, A2A2

NOTE

To find index numbers for circuit board components, use the reference designator index at the end of this chapter. The complete reference designator for a circuit board component consists of "1," followed by the assembly designator (A1A1, A1A2, etc.), then the reference designator on the illustration. For example, the complete reference designator for R25 on the Exciter PWB Assy is 1A1A1 R25.

Figure & Index Number	Part Number	FSCM	Description							Units Per Assy	Usable On Code	SMR Code
			1	2	3	4	5	6	7			
7-35-	10085-0260	14304	POWER SUPPLY ASSY, A2A2							1		PAODD
- 1	MS3367-4-9	96906	. STRAP, TIE DOWN							8		PADZZ
- 2	M83519/1-2	81349	. SLEEVE, SOLDER							2		PADZZ
- 3	622D392M055AM2A	56289	. CAPACITOR, FXD							2		PADZZ
- 4	735P305X9100SLL	56289	. CAPACITOR, FXD, MYLAR							1		PADZZ
- 5	622D123M020AM2A	56289	. CAP, FXD, ELCTLT							2		PADZZ
- 6	2425003X5U152Z	56289	. CAPACITOR, FXD, CER							2		PADZZ
- 7	MR872R	04713	. SEMICOND DEVICE, DIO							1		PADZZ
- 8	JAN1N5417	81349	. SEMICOND DEVICE, DIO							2		PADZZ
- 9	10085-0266	14304	. COIL, RF							1		PADZZ
- 10	22-01-3087	27264	. CONNECTOR, PLUG, ELEC							3		PADZZ
- 11	22-01-3037	27264	. CONNECTOR, PLUG, ELEC							2		PADZZ
- 12	MJ14003	04713	. TRANSISTOR							2		PADZZ
- 13	2N5884	80131	. TRANSISTOR							1		PADZZ
- 14	RE70N13R7	81349	. RESISTOR, FXD							1		PADZZ
- 15	RE70N64R9	81349	. RESISTOR, FXD							1		PADZZ
- 16	10085-0254	14304	. RESISTOR, THERMAL							1		PAOZZ
- 17	10085-0259	14304	. HEATSINK							1		XB
- 18	10085-0263	14304	. COVER							1		XB
- 19	10085-0220	14304	. CIRCUIT CARD ASSY							1		PADLD
- 20	10085-0269	14304	. RETAINER							1		XB
- 21	08-56-0110	27264	. CONNECTOR, PLUG, ELEC							10		PADZZ
- 22	2-520182-4	00779	. CONTACT, ELEC							7		PADZZ
- 23	ST5M1554-001	76301	. SOCKET PLUGIN ELEC							2		PADZZ
- 24	374753-1	00752	. SOCKET PLUGIN ELEC							1		PADZZ
- 25	43-03-4	13103	. INSULATOR							3		PADZZ
- 26	10085-0255	14304	. CONTACT							2		XB
- 27	MS51957-43	96906	. SCREW, MACHINE (AP)							7		PAOZZ
- 28	MS51957-14	96906	. SCREW, MACHINE (AP)							4		PADZZ
- 29	MS35338-135	96906	. WASHER, SPLIT (AP)							4		PADZZ
- 30	MS51958-60	96906	. SCREW, MACHINE (AP)							8		PAOZZ
- 31	MS51957-31	96906	. SCREW, MACHINE (AP)							6		PAOZZ
- 32	MS15795-808	96906	. WASHER, FLAT (AP)							4		PADZZ
- 33	MS35338-138	96906	. WASHER, LOCK (AP)							8		PAOZZ
- 34	MS24630-10	96906	. SCREW, MACHINE (AP)							8		PAOZZ
- 35	MS35338-137	96906	. WASHER, LOCK (AP)							7		PAOZZ
- 36	MS15795-807	96906	. WASHER, FLAT (AP)							4		PADZZ
- 37	MS35338-136	96906	. WASHER, SPLIT (AP)							6		PADZZ
- 38	MS35649-284	96906	. NUT, PLAIN, HEX							1		PAOZZ
- 39	MS25036-108	96906	. TERMINAL, LUG							2		PADZZ
- 40	1546	06540	. BUMPER, RUBBER							1		XB
- 41	10085-0267	14304	. BRACKET							1		XB
- 42	10085-0277	14304	. BRACKET							1		XB
- 43	MS25036-153	96906	. TERMINAL, LUG							2		PADZZ
- 44	MS77068-4	96906	. LUG, SOLDER							2		PADZZ

Figure & Index Number	Part Number	FSCM	Description							Units Per Assy	Usable On Code	SMR Code
			1	2	3	4	5	6	7			
- 45	MS77068-3	96906	.	L	U	G				1		PADZZ
- 46	TC-105A	59730	.	B	A	S	E			4		PADZZ
- 47	O1-0101-0144	59950	.	G	A	S	K	E	T	23		XB
- 48	MS35333-73	96906	.	W	A	S	H	E	R, L	6		PAOZZ
- 49	MS25036-156	96906	.	T	E	R	M	I	N	1		PADZZ
- 50	MS25036-112	96906	.	T	E	R	M	I	N	1		PADZZ

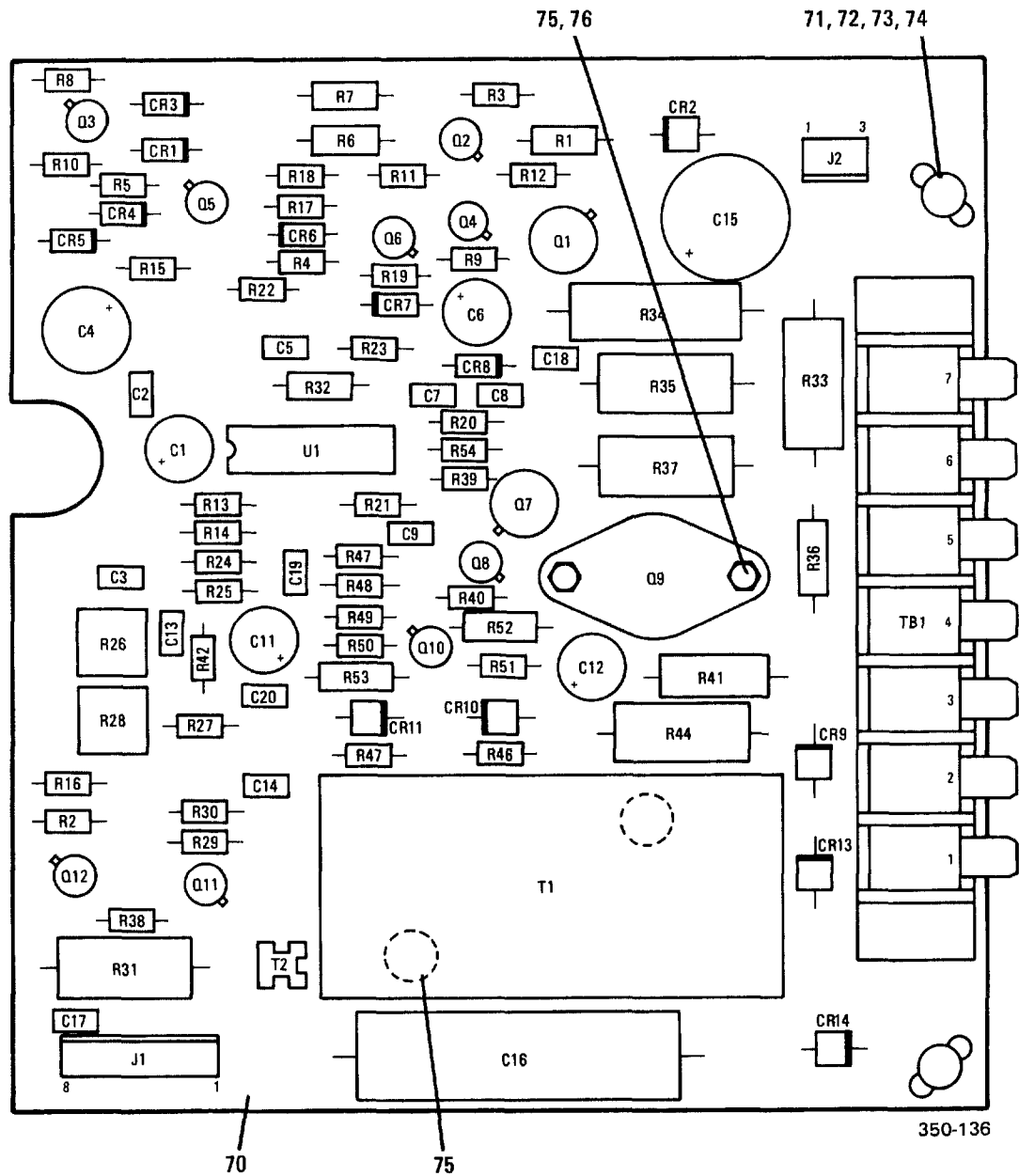


Figure 7-36. 13.6 V Power Supply PWB Assy, A2A2A1

(7-115 Blank)/7-116

NOTE

To find index numbers for circuit board components, use the reference designator index at the end of this chapter. The complete reference designator for a circuit board component consists of "1," followed by the assembly designator (A1A1, A1A2, etc.), then the reference designator on the illustration. For example, the complete reference designator for R25 on the Exciter PWB Assy is 1A1A1 R25.

Figure & Index Number	Part Number	FSCM	Description 1 2 3 4 5 6 7	Units	Usable	SMR Code
				Per Assy	On Code	
7-36-	10085-0220	14304	CIRCUIT CARD ASSY, A2A2A1	1		PADLD
- 1	T392C106M025AS	31433	. CAP, FXD, ELCTLT	1		PADZZ
- 2	CK06BX104K	81349	. CAPACITOR, FXD, CER	6		PADZZ
- 3	672D476H040CD5C	56289	. CAP, FXD, ELCTLT	1		PADZZ
- 4	T392D476K010AS	31433	. CAP, FXD, ELCTLT	1		PADZZ
- 5	M39014/02-1326	81349	. CAPACITOR, FXD, CER	1		PADZZ
- 6	CK06BX473K	81349	. CAPACITOR, FXD, CER	2		PADZZ
- 7	CK06BX103K	81349	. CAPACITOR, FXD, CER	1		PADZZ
- 8	T392D226M025AS	31433	. CAP, FXD, ELCTLT	1		PADZZ
- 9	T392B335M025AS	31433	. CAP, FXD, ELCTLT	1		PADZZ
- 10	672D337H040ET50	56289	. CAP, FXD, ELCTLT	1		PADZZ
- 11	710P224X9200MQ	56289	. CAP, FXD, ELCTLT	1		PADZZ
- 12	CK05BX471K	81349	. CAPACITOR, FXD, CER	1		PADZZ
- 13	CK06BX474K	81349	. CAPACITOR, FXD, CER	1		PADZZ
- 14	1N4750A	80131	. SEMICOND DEVICE, DIO	1		PADZZ
- 15	JAN1N5417	81349	. SEMICOND DEVICE, DIO	6		PADZZ
- 16	1N4743A	81349	. SEMICOND DEVICE, DIO	1		PADZZ
- 17	JAN1N4454	81349	. SEMICOND DEVICE, DIO	5		PADZZ
- 18	22-11-2082	27264	. CONNECTOR, RCPT, ELEC	1		PADZZ
- 19	22-11-2032	27264	. CONN RECP ELECT	1		PADZZ
- 20	JAN2N3439	81349	. TRANSISTOR	2		PADZZ
- 21	JAN2N2907A	81349	. TRANSISTOR	4		PADZZ
- 22	JAN2N2222A	81349	. TRANSISTOR	5		PADZZ
- 23	2N6316	80131	. TRANSISTOR	1		PADZZ
- 24	ERD50TJ332	54473	. RESISTOR, FXD, COMP	1		PADZZ
- 25	CF07-182J	78488	. RESISTOR, FXD, COMP	2		PADZZ
- 26	RN55D4640F	81349	. RESISTOR, FXD, FILM	3		PADZZ
- 27	CF07-224J	78488	. RESISTOR, FXD, COMP	1		PADZZ
- 28	RNC60K1651FS	81349	. RESISTOR, FXD, FILM	1		PADZZ
- 29	CF07-103J	78488	. RESISTOR, FXD, COMP	1		PADZZ
- 30	ERD50TJ103	54473	. RESISTOR, FXD, COMP	1		PADZZ
- 31	CF07-472J	78488	. RESISTOR, FXD, COMP	3		PADZZ
- 32	CF07-682J	78488	. RESISTOR, FXD, COMP	1		PADZZ
- 33	CF07-271J	78488	. RESISTOR, FXD, COMP	1		PADZZ
- 34	RN55D1002F	81349	. RESISTOR, FXD, FILM	2		PADZZ
- 35	RNC55K1502FS	81349	. RESISTOR, FXD, FILM	1		PADZZ
- 36	RN55D4991F	81349	. RESISTOR, FXD, FILM	2		PADZZ
- 37	CF07-222J	78488	. RESISTOR, FXD, COMP	3		PADZZ
- 38	CF07-681J	78488	. RESISTOR, FXD, COMP	2		PADZZ
- 39	CF07-100J	78488	. RESISTOR, FXD, COMP	2		PADZZ
- 40	RNC55K2672FS	81349	. RESISTOR, FXD, FILM	1		PADZZ
- 41	RN55D5111F	81349	. RESISTOR, FXD, FILM	1		PADZZ
- 42	RN55D2491F	81349	. RESISTOR, FXD, FILM	1		PADZZ
- 43	3386F-1-202	32997	. RESISTOR, VARIABLE	1		PADZZ
- 44	RN55D3922F	81349	. RESISTOR, FXD, FILM	1		PADZZ

Figure & Index Number	Part Number	FSCM	Description							Units Per Assy	Usable On Code	SMR Code
			1	2	3	4	5	6	7			
- 45	3386F-1-104	32997	.	RESISTOR	,	VARIABLE					1	PADZZ
- 46	CF07-473J	78488	.	RESISTOR	,	FXD,COMP					2	PADZZ
- 47	RCR42G471JS	81349	.	RESISTOR	,	FXD,COMP					1	PADZZ
- 48	ERD50TJ272	54473	.	RESISTOR	,	FXD,COMP					1	PADZZ
- 49	RNC60H4993DS	81349	.	RESISTOR	,	FXD,COMP					1	PADZZ
- 50	FP67-6800HMPORM5PCT	24546	.	RESISTOR	,	FXD,COMP					1	PADZZ
- 51	RCR42G470JS	81349	.	RESISTOR	,	FXD,COMP					2	PADZZ
- 52	CF07-101J	78488	.	RESISTOR	,	FXD,COMP					1	PADZZ
- 53	ERD50TJ101	54473	.	RESISTOR	,	FXD,COMP					1	PADZZ
- 54	RCR42G681JS	81349	.	RESISTOR	,	FXD,COMP					1	PADZZ
- 55	CF07-153J	78488	.	RESISTOR	,	FXD,COMP					1	PADZZ
- 56	CF07-102J	78488	.	RESISTOR	,	FXD,COMP					1	PADZZ
- 57	CF07-221J	78488	.	RESISTOR	,	FXD,COMP					1	PADZZ
- 58	1240S-4,7-10	00213	.	RESISTOR	,	FXD,WW					1	PADZZ
- 59	RCR42G470JM	81349	.	RESISTOR	,	FXD,COMP					2	PADZZ
- 60	RN55D2150F	81349	.	RESISTOR	,	FXD,FILM					1	PADZZ
- 61	RN55D1001F	81349	.	RESISTOR	,	FXD,FILM					1	PADZZ
- 62	CF07-330J	78488	.	RESISTOR	,	FXD,COMP					1	PADZZ
- 63	RNC60K15ROFS	81349	.	RESISTOR	,	FXD,FILM					2	PADZZ
- 64	RN60D15ROF	81349	.	RESISTOR	,	FXD,FILM					2	PADZZ
- 65	3329H-1-201	32997	.	RESISTOR	,	VARIABLE					1	PADZZ
- 66	10085-0225	14304	.	TRANSFORMER	,	RF					1	PADZZ
- 67	10085-5014	14304	.	TRANSFORMER	,	RF					1	PADZZ
- 68	302207-B8	52458	.	TERMINAL							1	PADZZ
- 69	SG1524F	18324	.	MICROCIRCUIT							1	PADZZ
- 70	10085-0229	14304	.	CIRCUIT CARD							1	XA
- 71	6611-0135	14304	.	RETAINER, SCREW							2	PADZZ
- 72	10085-5156	14304	.	BUSHING							2	PADZZ
- 73	MS51957-17	96906	.	SCREW, MACHINE (AP)							2	PADZZ
- 74	MS35338-135	96906	.	WASHER, SPLIT (AP)							2	PADZZ
- 75	841-00	92967	.	NUT, CLINCH (AP)							4	PADZZ
- 76	MS51957-15	96906	.	SCREW, MACHINE (AP)							2	PADZZ

Section III. NUMERICAL INDEX

Part Number	Fig No.	Index No.	Qty per End Item	Part Number	Fig No.	Index No.	Qty per End Item
ADC0808CCJ	7-25	42	1	CF07-183J	7-11	128	8
B25600F002	7-2	44	2	CF07-184J	7-15	57	3
B51547F013	7-2	46	2	CF07-201J	7-11	145	2
B51568F029	7-2	45	2	CF07-202J	7-11	144	1
C12-0001-003	7-20	8	1	CF07-203J	7-11	108	2
C13-0103-102	7-18	12	1	CF07-220J	7-11	152	14
C330C223J1G5CA	7-32	11	1	CF07-221J	7-11	137	23
C340C473J1G5CA	7-32	13	2	CF07-222J	7-11	80	46
C350C104J1G5CA	7-32	12	3	CF07-223J	7-11	97	19
C45-0002-621	7-15	15	1	CF07-224J	7-11	170	5
C45-0002-751	7-15	16	1	CF07-242J	7-11	112	4
C61-0002-003	7-22	2	1	CF07-270J	7-11	162	7
CA3028S	7-18	45	2	CF07-271J	7-11	172	5
CD19FC562J03	7-20	20	2	CF07-272J	7-12	34	16
CD4001BF	7-26	40	1	CF07-273J	7-11	83	20
CD4011BD/3	7-17	124	2	CF07-2R7J	7-18	112	5
CD4011BF	7-20	95	3	CF07-303J	7-32	47	1
CD4012BF	7-17	123	1	CF07-330J	7-20	80	2
CD4016BF	7-25	49	1	CF07-331J	7-11	168	6
CD4020BF	7-25	48	1	CF07-332J	7-11	84	12
CD4021BF	7-11	201	6	CF07-333J	7-11	92	18
CD4030BF	7-17	122	2	CF07-334J	7-11	153	5
CD4046BF	7-21	137	1	CF07-390J	7-34	38	1
CD4049UBF	7-32	103	2	CF07-391J	7-11	166	5
CD4051BD/3	7-32	104	1	CF07-392J	7-11	86	4
CD4053BF	7-11	189	2	CF07-393J	7-11	94	9
CD4094BF	7-11	200	16	CF07-3R3J	7-20	61	1
CD4516BF	7-17	120	2	CF07-3R9J	7-26	27	1
CD4536BF	7-17	119	1	CF07-470J	7-11	133	27
CDT. 22-35	7-18	37	2	CF07-471J	7-11	81	67
CF07-100J	7-13	105	18	CF07-472J	7-11	79	60
CF07-101J	7-11	102	57	CF07-473J	7-11	157	37
CF07-102J	7-11	89	99	CF07-474J	7-16	113	2
CF07-103J	7-11	85	163	CF07-4R7J	7-13	83	2
CF07-104J	7-11	93	59	CF07-510J	7-12	24	6
CF07-105J	7-15	56	8	CF07-511J	7-15	65	1
CF07-106J	7-21	109	1	CF07-512J	7-26	24	2
CF07-121J	7-17	103	3	CF07-513J	7-11	110	2
CF07-122J	7-11	104	15	CF07-560J	7-11	126	6
CF07-123J	7-11	141	4	CF07-561J	7-11	125	21
CF07-124J	7-18	128	1	CF07-562J	7-11	98	23
CF07-150J	7-18	90	2	CF07-563J	7-11	87	5
CF07-151J	7-11	88	10	CF07-620J	7-15	62	1
CF07-152J	7-11	113	11	CF07-680J	7-13	87	9
CF07-153J	7-11	82	17	CF07-681J	7-11	140	9
CF07-154J	7-11	177	4	CF07-682J	7-11	129	12
CF07-160J	7-20	82	1	CF07-683J	7-11	95	3
CF07-161J	7-15	63	2	CF07-6R8J	7-28	52	2
CF07-180J	7-20	63	5	CF07-750J	7-15	64	1
CF07-181J	7-15	47	6	CF07-751J	7-11	127	1
CF07-182J	7-11	161	12	CF07-820J	7-13	98	1

Part Number	Fig No.	Index No.	Qty per End Item	Part Number	Fig No.	Index No.	Qty per End Item
CF07-821J	7-11	130	15	CM06FD112J03	7-15	13	2
CF07-822J	7-11	109	6	CM06FD152J03	7-21	13	1
CF07-823J	7-20	85	1	CM06FD222J03	7-16	59	2
CF07-910J	7-15	35	1	CM06FD272J03	7-20	24	2
CK05BX100K	7-22	8	1	CM06FD392J03	7-32	20	2
CK05BX101K	7-18	13	3	CM06FD821J03	7-15	2	4
CK05BX102K	7-11	31	2	CMR05C100DODR	7-16	49	4
CK05BX151K	7-11	21	2	CMR05C150JODR	7-13	29	1
CK05BX181K	7-12	4	1	CMR05C150JODR	7-32	10	1
CK05BX221K	7-11	13	2	CMR05C5RODODR	7-16	46	2
CK05BX471K	7-16	56	4	CMR05E200JODR	7-11	39	1
CK06BX103K	7-11	22	2	CMR05E220JODR	7-18	19	1
CK06BX104K	7-11	15	2	CMR05E270GODR	7-13	10	5
CK06BX222K	7-18	40	2	CMR05E300GODR	7-16	33	3
CK06BX223K	7-18	21	4	CMR05E330GODR	7-11	34	6
CK06BX224K	7-11	12	2	CMR05E360GODR	7-13	9	3
CK06BX273K	7-28	24	3	CMR05E390GODR	7-16	43	5
CK06BX332K	7-28	23	3	CMR05E430GODR	7-16	36	8
CK06BX473K	7-36	6	4	CMR05E470GODR	7-16	34	7
CK06BX474K	7-11	14	2	CMR05E510GODR	7-18	16	2
CK06BX683K	7-20	12	4	CMR05E560GODR	7-13	14	9
CM05CD050D03	7-20	5	3	CMR05E680GODR	7-13	28	17
CM05CD100D03	7-16	50	2	CMR05E750GODR	7-13	21	4
CM05CD180J03	7-21	14	1	CMR05E820GODR	7-13	13	9
CM05ED270G03	7-13	18	2	CMR05F101GODR	7-13	11	5
CM05ED300G03	7-16	48	2	CMR05F111GODR	7-16	19	8
CM05ED330J03	7-11	36	2	CMR05F121GODR	7-15	6	6
CM05ED360J03	7-13	16	2	CMR05F131GODR	7-16	29	5
CM05ED390G03	7-16	44	2	CMR05F151GODR	7-16	9	6
CM05ED430G03	7-16	37	2	CMR05F161GODR	7-32	18	1
CM05ED470G03	7-16	35	2	CMR05F181GODR	7-16	10	9
CM05ED510G03	7-20	9	3	CMR05F201GODR	7-16	21	6
CM05ED560G03	7-16	27	4	CMR05F221GODR	7-16	22	7
CM05ED680G03	7-13	30	2	CMR05F241GODR	7-16	26	1
CM05ED750G03	7-16	38	5	CMR05F271GODR	7-13	19	2
CM05ED820G03	7-13	17	2	CMR05F301GODR	7-16	16	2
CM05FD101J03	7-13	15	2	CMR05F331GODR	7-32	21	1
CM05FD111G03	7-16	20	2	CMR05F391GODR	7-13	7	3
CM05FD121G03	7-16	32	7	CMR05F910GODR	7-13	12	3
CM05FD131G03	7-16	31	2	CMR06F102GODR	7-11	24	3
CM05FD151G03	7-16	30	2	CMR06F112GODR	7-18	23	3
CM05FD181G03	7-16	11	2	CMR06F122GODR	7-18	25	1
CM05FD201G03	7-16	24	2	CMR06F182GODR	7-32	17	1
CM05FD221G03	7-16	25	2	CMR06F222GODR	7-16	57	2
CM05FD271J03	7-13	20	2	CMR06F272GODP	7-20	21	2
CM05FD301G03	7-16	45	2	CMR06F362GODR	7-32	22	1
CM05FD331G03	7-15	1	8	CMR06F392GODR	7-32	15	3
CM05FD361G03	7-15	14	6	CMR06F431GODI	7-15	9	1
CM05FD391J03	7-15	4	3	CMR06F431GODR	7-32	24	1
CM05FD910G03	7-16	13	3	CMR06F432GODR	7-32	23	1
CM06FD102J03	7-11	28	2	CMR06F471GODR	7-21	17	1

Part Number	Fig No.	Index No.	Qty per End Item	Part Number	Fig No.	Index No.	Qty per End Item
CMR06F621GODR	7-20	13	1	G-12-A	7-6	1	1
CMR06F751GODR	7-20	23	1	GC283	7-4	4	1
CU31E600	7-16	5	1	H-0963	7-23	53	3
CV31B250	7-16	7	2	H-6767	7-34	68	6
CV31D350	7-20	19	1	H-6768	7-4	18	6
CV31E600	7-32	9	1	H-6769	7-12	45	3
D-607-09	7-33	22	2	H11L2	7-26	31	1
D20419-16	7-8	6	1	H408-1	7-3	4	8
D20419-16588D205-12	7-9	1	2	HKP-HH	7-6	19	1
DAC-08F	7-17	125	1	HLCDO438AY	7-24	6	5
DE24657	7-9	6	1	HLMP-3301	7-17	14	7
DM-15-18J	7-16	47	7	HLMP-3401	7-17	15	1
DM-15-20J	7-16	39	9	IM64021DL	7-26	36	1
DM-15-24J	7-16	41	6	J-0031	7-18	44	5
DM-15-250J	7-16	23	2	JAN1N3064	7-20	30	5
DM-15-500J	7-16	12	2	JAN1N3611	7-11	40	17
DM15F431-G	7-16	17	1	JAN1N4454	7-11	41	216
DM5416J	7-23	40	1	JAN1N4461	7-15	80	1
DR10DB229J	7-13	23	1	JAN1N4463	7-28	95	3
DR10DB569J	7-13	35	1	JAN1N5417	7-28	28	16
DR10DB689J	7-18	8	1	JAN1N5711	7-11	45	18
DR10DB829J	7-13	25	1	JAN1N748A	7-21	24	1
DS1692J	7-32	100	1	JAN1N750A	7-11	205	4
DS8629J-8	7-20	94	1	JAN1N751A	7-11	204	2
DV11PS15D	7-11	35	1	JAN1N752A	7-34	13	1
DV11PS25B	7-16	6	4	JAN1N759A	7-17	127	3
E312-E0001	7-23	38	1	JAN1N825	7-21	23	2
ERD50TJ100	7-25	33	3	JAN1N966B	7-17	126	1
ERD50TJ101	7-18	126	2	JAN2N2219A	7-11	72	5
ERD50TJ102	7-11	124	3	JAN2N2222A	7-11	71	92
ERD50TJ103	7-36	30	1	JAN2N2369A	7-11	73	7
ERD50TJ109	7-15	38	2	JAN2N2857	7-11	75	4
ERD50TJ121	7-15	37	1	JAN2N2907A	7-11	70	34
ERD50TJ122	7-29	34	1	JAN2N3439	7-13	74	10
ERD50TJ150	7-15	41	2	JAN2N3866A	7-13	76	5
ERD50TJ151	7-13	96	3	JAN2N4091	7-18	75	2
ERD50TJ152	7-34	28	1	JAN2N4957	7-21	42	3
ERD50TJ154	7-13	81	1	JAN2N5116	7-21	45	2
ERD50TJ182	7-34	40	1	JAN2N6338	7-28	39	2
ERD50TJ221	7-18	119	1	JAN2N6341	7-28	38	2
ERD50TJ270	7-15	39	1	K-0118	7-30	5	1
ERD50TJ271	7-15	45	4	KFB3-440-16ET	7-31	1	4
ERD50TJ272	7-36	48	1	KFB3-440-18ET	7-13	1	2
ERD50TJ331	7-17	89	2	KFB3-440-6-HS	7-31	7	4
ERD50TJ332	7-36	24	1	KFH-440-8	7-28	105	6
ERD50TJ479	7-15	46	2	KT45J3	7-16	124	1
ERD50TJ561	7-11	169	2	L-0254	7-13	51	1
ERD50TJ680	7-15	40	2	L-0255	7-13	50	2
ERD50TJ682	7-34	62	1	L-0256	7-20	37	1
FBT00-015	7-21	135	1	L11-0004-017	7-13	69	1
FP67-6800HMPORM5PCT	7-36	50	1	L13-0002-331	7-28	32	1

Part Number	Flg No.	Index No.	Qty per End Item	Part Number	Flg No.	Index No.	Qty per End Item
L13-0002-470	7-28	31	1	M39014/02-1344	7-28	7	1
LH0070-OH	7-11	202	1	M39014/02-1345	7-11	25	3
LM111J-8	7-32	94	2	M39014/02-1347	7-17	11	3
LM218J-8	7-32	1	1	M39014/02-1350	7-11	8	392
LM2901F	7-34	1	1	M39014/02-1352	7-20	11	2
LM2904N	7-15	77	1	M39014/02-1354	7-18	34	1
LT10K227	7-18	63	1	M39014/02-1356	7-11	9	8
M24308/1-1	7-9	5	1	M39014/02-1358	7-20	17	1
M24308/3-1	7-8	3	1	M39014/02-1360	7-11	11	79
M3850/30102BCB	7-20	97	6	M39014/02-1419	7-21	19	1
M38510/00206BCB	7-21	126	1	M39014102-1338	7-11	6	164
M38510/008021BCB	7-11	197	2	M83519/1-2	7-35	2	2
M38510/06101BEB	7-21	134	1	M85049/41-12A	7-9	10	2
M38510/07101BCB	7-21	131	2	MC12013L	7-20	92	2
M38510/10703BXC	7-22	42	2	MC145152L	7-20	90	1
M38510/11201BCB	7-25	45	1	MC1558U	7-11	3	48
M38510/11502BXC	7-32	112	1	MC1733L	7-16	3	3
M38510/17103BCB	7-32	98	1	MCM01-007EC670GO	7-16	51	2
M38510/17203BCB	7-32	96	1	MCM01-007FC1420GO	7-16	55	1
M38510/30003BCB	7-25	43	5	MD015E104MAA	7-23	1	17
M38510/30005BCB	7-26	34	1	MD918A	7-20	52	2
M38510/30106BEB	7-21	130	1	MDLSBL1	7-11	68	3
M38510/30301BCB	7-21	127	1	MJ14003	7-35	12	2
M38510/30501BCB	7-21	128	1	MM54C14J	7-11	195	1
M38510/30608BEB	7-23	35	3	MP-0745	7-23	52	2
M38510/30701BEB	7-11	198	6	MP-1142	7-11	56	15
M38510/30702BEB	7-25	39	2	MP150	7-25	69	1
M38510/31004BCB	7-25	41	2	MPS-A18	7-13	72	3
M38510/31005BCB	7-11	203	1	MPS-H34	7-21	47	9
M38510/31505BEA	7-20	93	2	MR5005R	7-14	7	1
M38510/32204BEB	7-11	199	4	MR826	7-29	2	1
M38510/32502BRW	7-25	37	1	MR872R	7-35	7	1
M39012/25-0006	7-6	21	1	MS-67-1-DC-WD	7-1	25	3
M39012/25-0011	7-6	20	1	MS14046-1	7-13	61	21
M39014/01-1330	7-11	19	1	MS14046-4	7-11	66	5
M39014/01-1339	7-11	30	4	MS14046-6	7-20	44	3
M39014/01-1342	7-11	20	2	MS14046-7	7-20	41	1
M39014/01-1345	7-11	10	7	MS14046-8	7-11	67	28
M39014/01-1351	7-11	32	8	MS15795-803	7-1	3	39
M39014/01-1357	7-11	29	32	MS15795-805	7-9	2	23
M39014/02-1322	7-18	27	1	MS15795-807	7-34	70	11
M39014/02-1326	7-36	5	3	MS15795-808	7-35	32	6
M39014/02-1329	7-18	29	2	MS16633-1025	7-1	7	2
M39014/02-1331	7-18	26	1	MS16995-10	7-14	22	9
M39014/02-1332	7-28	18	1	MS18130-11	7-13	49	2
M39014/02-1334	7-13	31	1	MS18130-14	7-13	64	1
M39014/02-1335	7-28	25	1	MS18130-15	7-13	59	1
M39014/02-1338	7-32	6	5	MS18130-2	7-18	52	1
M39014/02-1340	7-28	12	1	MS18130-5	7-11	62	4
M39014/02-1342	7-13	4	4	MS24630-10	7-35	34	8
M39014/02-1343	7-11	23	1	MS24693-C16	7-27	8	3

Part Number	Fig No.	Index No.	Qty per End Item	Part Number	Fig No.	Index No.	Qty per End Item
MS24693-C26	7-2	52	6	MS75083-8	7-13	63	1
MS24693-C272	7-3	13	4	MS75084-10	7-20	39	3
MS24693-C5	7-28	112	3	MS75084-12	7-16	91	9
MS25036-108	7-35	39	2	MS75084-16	7-18	53	1
MS25036-111	7-14	25	2	MS75084-3	7-11	64	4
MS25036-112	7-35	50	1	MS75085-19	7-26	10	6
MS25036-153	7-35	43	2	MS75085-2	7-26	9	11
MS25036-156	7-35	49	3	MS75087-5	7-13	52	1
MS3102A20-8P	7-2	16	3	MS75087-7	7-18	69	2
MS3102R20-27S	7-31	3	1	MS75089-10	7-18	65	1
MS3102R20-8P	7-6	17	2	MS75089-12	7-11	57	3
MS3106A20-8SC	7-9	9	2	MS75089-13	7-18	66	1
MS3367-4-9	7-16	2	48	MS75089-17	7-11	58	1
MS35333-70	7-14	3	12	MS77068-1	7-28	107	4
MS35333-72	7-15	86	1	MS77068-3	7-35	45	8
MS35333-73	7-35	48	8	MS77068-4	7-35	44	2
MS35333-76	7-23	54	3	MS90538-12	7-11	60	3
MS35338-134	7-3	2	12	MS90538-20	7-13	65	3
MS35338-135	7-11	212	10	MS90538-3	7-18	68	1
MS35338-136	7-9	3	45	MS90539-15	7-11	59	4
MS35338-137	7-35	35	7	MS90539-3	7-11	65	11
MS35338-138	7-35	33	12	MS90539-7	7-13	48	3
MS35489-4	7-11	210	6	MS90541-5	7-16	90	1
MS35649-244	7-18	154	8	MSD6150	7-11	42	1
MS35649-284	7-35	38	1	MSS-4200	7-30	11	2
MS51957-13	7-13	132	7	MV-309	7-20	29	2
MS51957-14	7-13	133	18	NE571N	7-11	190	3
MS51957-15	7-36	76	4	NT1-DC12V	7-16	68	14
MS51957-16	7-14	16	21	PN4917	7-21	43	9
MS51957-17	7-11	211	80	PT4371A	7-14	8	1
MS51957-18	7-1	4	2	PT4371B	7-14	9	1
MS51957-2	7-30	19	4	PT4371C	7-14	10	1
MS51957-28	7-9	4	19	QS200M36	7-2	48	1
MS51957-3	7-30	20	2	RCR07G106JM	7-32	58	1
MS51957-30	7-2	60	4	RCR32G100JS	7-2	22	1
MS51957-31	7-35	31	6	RCR32G102JM	7-34	61	3
MS51957-38	7-2	37	4	RCR32G102JS	7-28	43	2
MS51957-4	7-3	3	8	RCR32G151JM	7-13	114	2
MS51957-43	7-35	27	9	RCR32G151JS	7-13	113	2
MS51957-45	7-2	53	2	RCR32G221JS	7-32	44	1
MS51957-48	7-34	69	4	RCR32G271JS	7-34	51	1
MS51958-60	7-35	30	8	RCR32G332JS	7-34	30	1
MS51958-72	7-2	54	4	RCR32G820JS	7-13	110	1
MS75083-1	7-13	55	4	RCR32G821JS	7-34	39	1
MS75083-10	7-18	61	1	RCR42G100JM	7-15	44	2
MS75083-13	7-13	70	1	RCR42G100JS	7-15	43	5
MS75083-2	7-13	53	2	RCR42G102JS	7-2	21	1
MS75083-3	7-13	57	4	RCR42G103JS	7-16	120	1
MS75083-5	7-13	54	2	RCR42G180JS	7-34	53	1
MS75083-6	7-13	66	3	RCR42G221JS	7-28	44	1
MS75083-7	7-11	63	3	RCR42G470JM	7-36	59	2

PART NUMBER	FIG NO.	INDEX NO.	QTY PER END ITEM
RCR42G470JS	7-36	51	2
RCR42G471JS	7-36	47	1
RCR42G681JS	7-36	54	1
RE70N13R7	7-35	14	1
RE70N64R9	7-35	15	1
RER75F1ROOR	7-2	23	1
RJR24FW202P	7-16	111	2
RJR24FW502D	7-25	16	1
RJR24FW502P	7-32	46	3
RJR24FW503P	7-11	122	2
RLR20C22R1FS	7-28	75	1
RN55D1000F	7-11	117	2
RN55D1001F	7-11	118	2
RN55D1002F	7-12	28	6
RN55D1003F	7-17	30	2
RN55D1004F	7-11	105	2
RN55D1151F	7-11	181	2
RN55D1212F	7-17	55	5
RN55D1331F	7-21	71	2
RN55D1332F	7-17	77	3
RN55D1402F	7-17	88	2
RN55D1472F	7-21	91	2
RN55D1503F	7-11	151	2
RN55D1652F	7-17	73	3
RN55D1821F	7-17	105	3
RN55D1824F	7-17	82	1
RN55D1961F	7-21	95	2
RN55D2001F	7-11	132	2
RN55D2002F	7-25	17	4
RN55D2004F	7-11	107	2
RN55D2150F	7-36	60	3
RN55D2210F	7-22	29	3
RN55D2211F	7-17	48	6
RN55D2431F	7-13	101	3
RN55D2432F	7-17	38	5
RN55D2491F	7-36	42	3
RN55D27R4F	7-18	78	3
RN55D3010F	7-11	160	2
RN55D3011F	7-11	121	2
RN55D3242F	7-32	68	2
RN55D3321F	7-20	71	3
RN55D3322F	7-17	39	5
RN55D3323F	7-17	29	3
RN55D3482F	7-34	56	3
RN55D3510F	7-11	146	2
RN55D3831F	7-21	105	2
RN55D3922F	7-36	44	3
RN55D39R2F	7-11	164	2
RN55D4320F	7-11	179	2
RN55D4321F	7-34	33	3
RN55D4422F	7-17	40	4

PART NUMBER	FIG NO.	INDEX NO.	QTY PER END ITEM
RN55D4640F	7-36	26	5
RN55D4750F	7-28	73	3
RN55D4751F	7-17	76	2
RN55D4990F	7-28	80	3
RN55D4991F	7-17	106	2
RN55D5110F	7-21	98	2
RN55D5111F	7-12	29	2
RN55D5620F	7-11	165	2
RN55D5901F	7-17	79	2
RN55D6040F	7-11	91	7
RN55D6190F	7-21	89	2
RN55D6810F	7-20	69	2
RN55D6811F	7-22	27	3
RN55D6812F	7-11	149	8
RN55D6980F	7-13	102	3
RN55D7501F	7-17	85	3
RN55D8250F	7-21	96	2
RN55D8251F	7-16	114	3
RN55D8451F	7-34	32	3
RN55D8R25F	7-28	78	1
RN55D9093F	7-21	108	1
RN55K2491FS	7-28	48	2
RN55K4320FS	7-11	178	2
RN55K6812FS	7-32	69	2
RN60D15R0F	7-36	64	2
RN60D3010F	7-30	9	2
RN60D56R2F	7-16	109	2
RNC55K1000FS	7-11	115	10
RNC55K1001FS	7-11	114	8
RNC55K1002FS	7-11	176	35
RNC55K1003FS	7-17	26	7
RNC55K1004FS	7-11	99	4
RNC55K1100FS	7-11	131	1
RNC55K1102FS	7-28	59	1
RNC55K1151FS	7-11	180	2
RNC55K1152FS	7-28	47	1
RNC55K1212RS	7-16	112	6
RNC55K1302FS	7-17	92	1
RNC55K1303FS	7-17	99	1
RNC55K1331RS	7-21	70	2
RNC55K1332FS	7-11	175	3
RNC55K1372FS	7-11	174	1
RNC55K1402FS	7-17	35	2
RNC55K1472FS	7-21	86	2
RNC55K1473FS	7-32	75	1
RNC55K1501FS	7-21	75	1
RNC55K1502FS	7-36	35	1
RNC55K1503FS	7-11	147	3
RNC55K1622FS	7-17	91	1
RNC55K1652FS	7-11	150	2
RNC55K1743FS	7-17	94	1